

In this PDF file:
9 maps from Section 6 followed by Figure 3
in higher resolution than possible in the full report.

Eight Canadian Metropolitan Areas: Who Lived Where in 2006?

Robert Murdie, Jennifer Logan, and
Richard Maaranen

Research Paper 229

Cities Centre, University of Toronto
September 2013

(formerly the Centre for Urban and Community Studies)

Funded by the Social Sciences and Humanities Research Council of Canada
through the Neighbourhood Change Research Partnership
www.neighbourhoodchange.ca



Social Sciences and Humanities
Research Council of Canada

Conseil de recherches en
sciences humaines du Canada

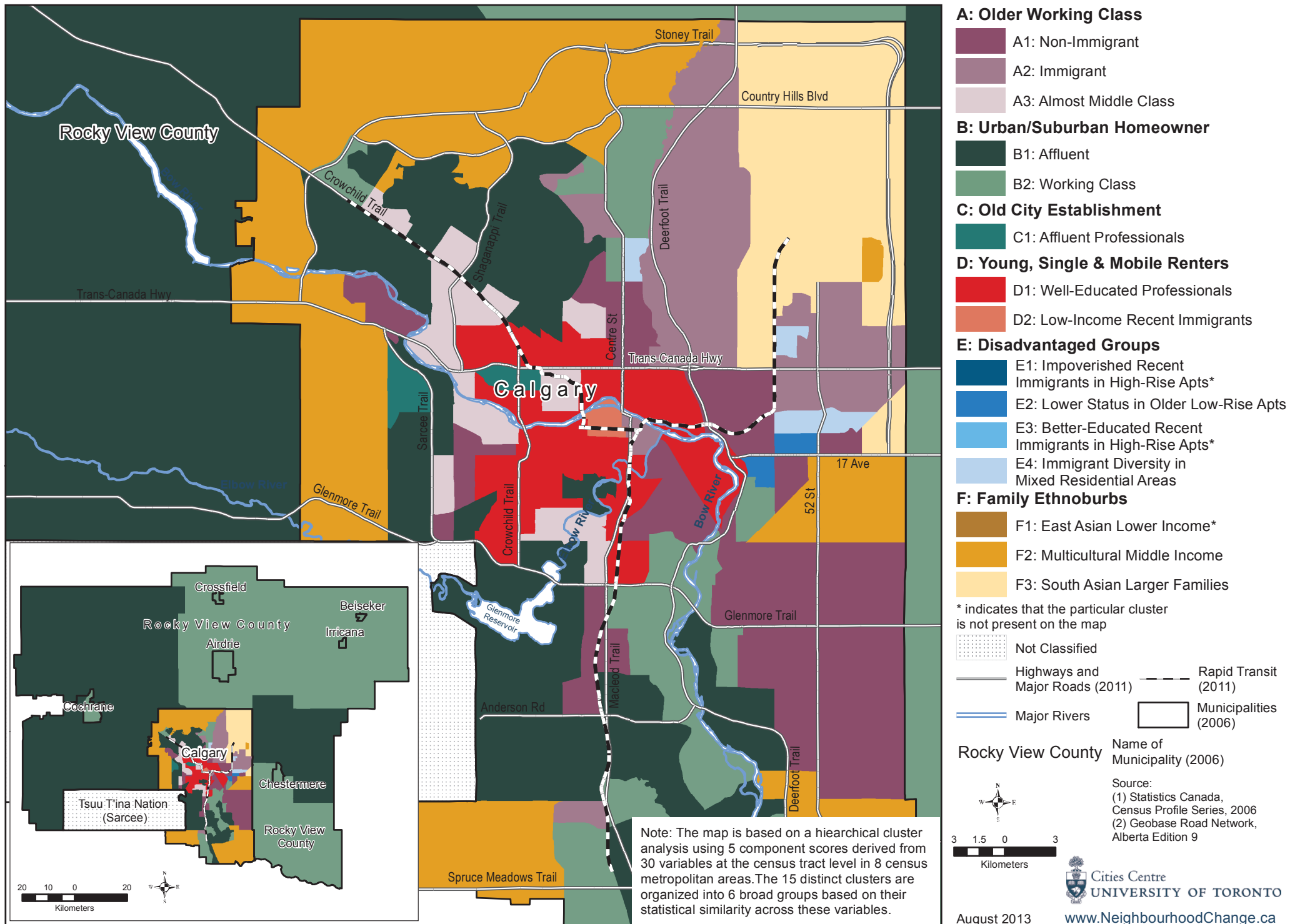


ISSN 0316-0068; ISBN 978-0-7727-1492-3

Table of Contents

1. BACKGROUND, DATA, AND METHODOLOGY	1
1.1 OBJECTIVE	1
1.2 CONTEXT	1
1.3 DATA	3
1.3.1 CMAs, Observational Units and Time Period	3
1.3.2 Variable Selection	4
1.3.3 Methodology	7
2. TYPOLOGY OF NEIGHBOURHOODS, 2006	9
2.1 PRINCIPAL COMPONENTS ANALYSIS	9
2.2 HIERARCHICAL CLUSTER ANALYSIS	11
2.3 INTERPRETATION OF THE TYPOLOGY	15
2.3.1 Group A: Older Working Class	15
2.3.2 Group B: Urban/Suburban Homeowner	17
2.3.3 Group C: Old City Establishment	18
2.3.4 Group D: Young, Single, and Mobile Renters	18
2.3.5 Group E: Disadvantaged Groups	19
2.3.6 Group F: Family Ethnoburbs	20
3. SUMMARY AND CONCLUSION	22
4. REFERENCES	24
5. ADDITIONAL TABLES	25
6. MAPS	35

Calgary CMA: Typology of Neighbourhoods by Census Tracts, 2006



The map displays the Halifax Metropolitan Area, including Bedford, Dartmouth, and the city of Halifax. The area is divided into 15 census tracts, each color-coded based on statistical similarity. The colors range from dark green to red. Key geographical features include the Bedford Basin, Dartmouth Harbour, and the Halifax Harbour. The map also shows major roads such as the 101 Highway, 102 Highway, and 103 Highway. An inset map in the top right corner shows the location of the Halifax Metropolitan Area within the province of Nova Scotia. A note at the bottom right explains the map's basis on a hierarchical cluster analysis.

Note: The map is based on a hierarchical cluster analysis using 5 component scores derived from 30 variables at the census tract level in 8 census metropolitan areas. The 15 distinct clusters are organized into 6 broad groups based on their statistical similarity across these variables.




- A1: Non-Immigrant
- A2: Immigrant*
- A3: Almost Middle Class

B1: Affluent
B2: Working Class

C1: Affluent Professionals

D1: Well-Educated Professionals
D2: Low-Income Recent Immigrants

- E1: Impoverished Recent Immigrants in High-Rise Apts*
- E2: Lower Status in Older Low-Rise Apts
- E3: Better-Educated Recent Immigrants in High-Rise Apts*
- E4: Immigrant Diversity in Mixed Residential Areas

-  F1: East Asian Lower Income*
-  F2: Multicultural Middle Income*
-  F3: South Asian Larger Families*

Highways and Major Roads (2011) Lakes

Cole Harbour 30	Name of Municipality or Equivalent (2006)
<i>Dartmouth</i>	Name of Former Municipality (1996)

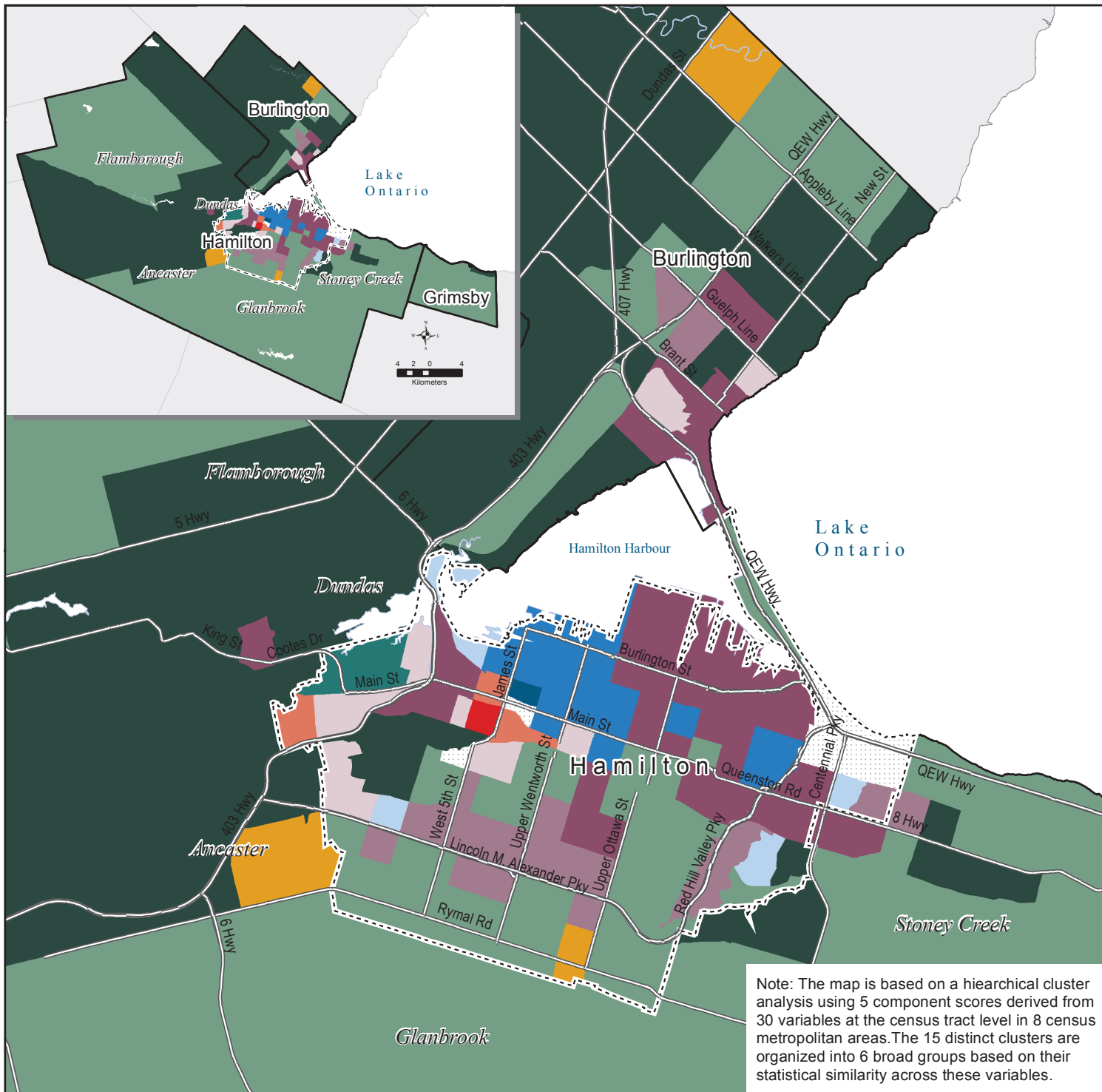


Cities Centre
UNIVERSITY OF TORONTO

August 2013

www.NeighbourhoodChange.ca

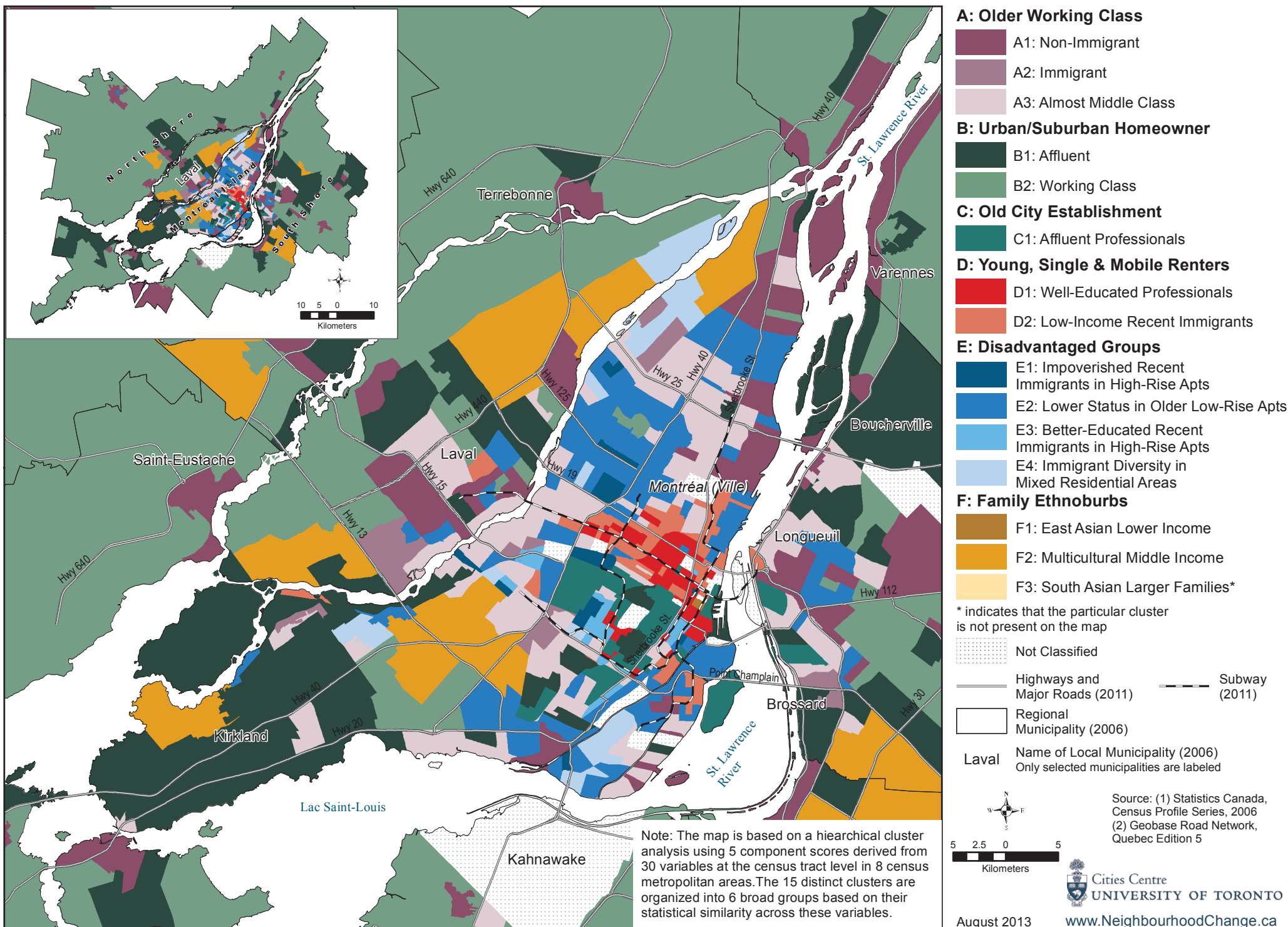
Hamilton CMA: Typology of Neighbourhoods by Census Tracts, 2006



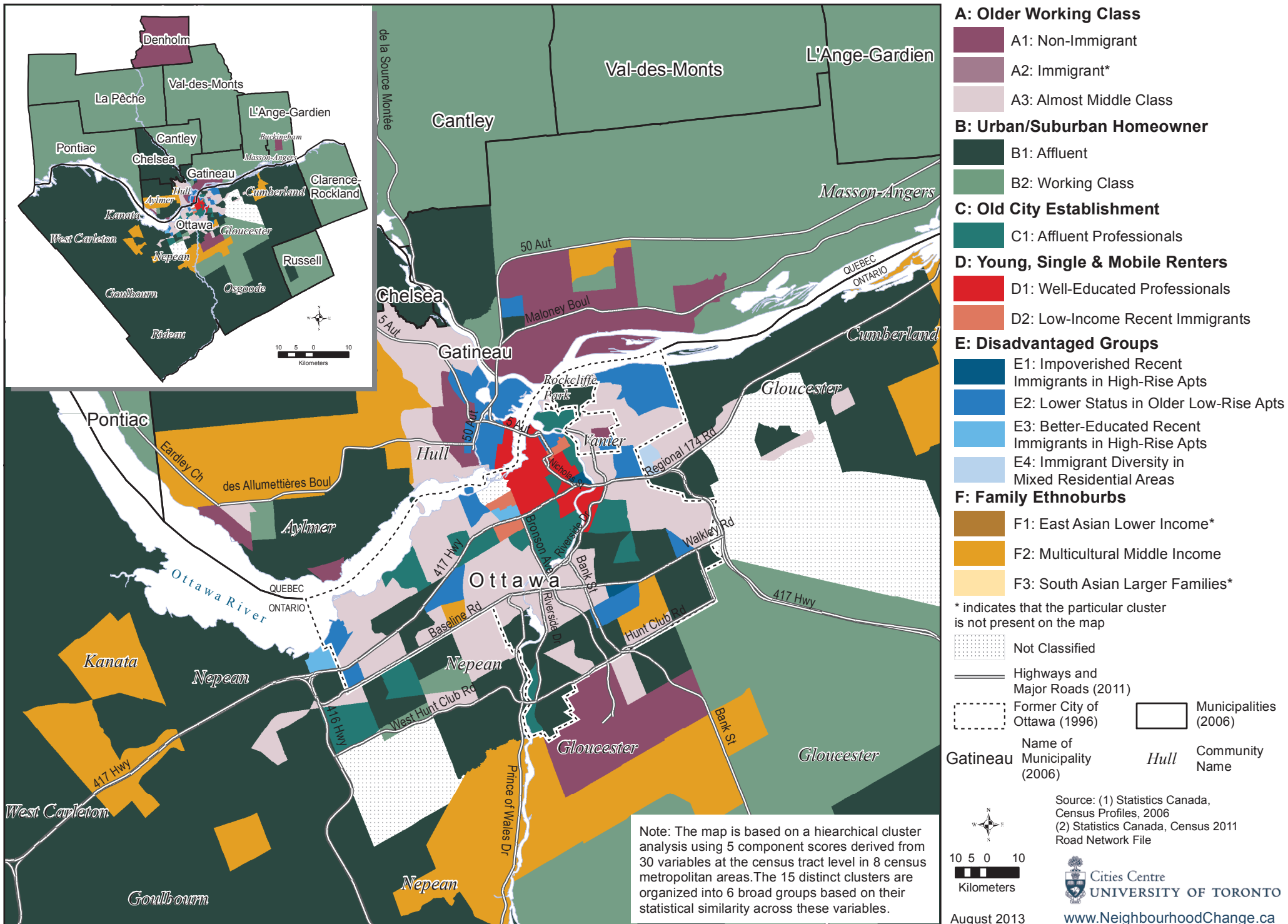
Note: The map is based on a hierarchical cluster analysis using 5 component scores derived from 30 variables at the census tract level in 8 census metropolitan areas. The 15 distinct clusters are organized into 6 broad groups based on their statistical similarity across these variables.



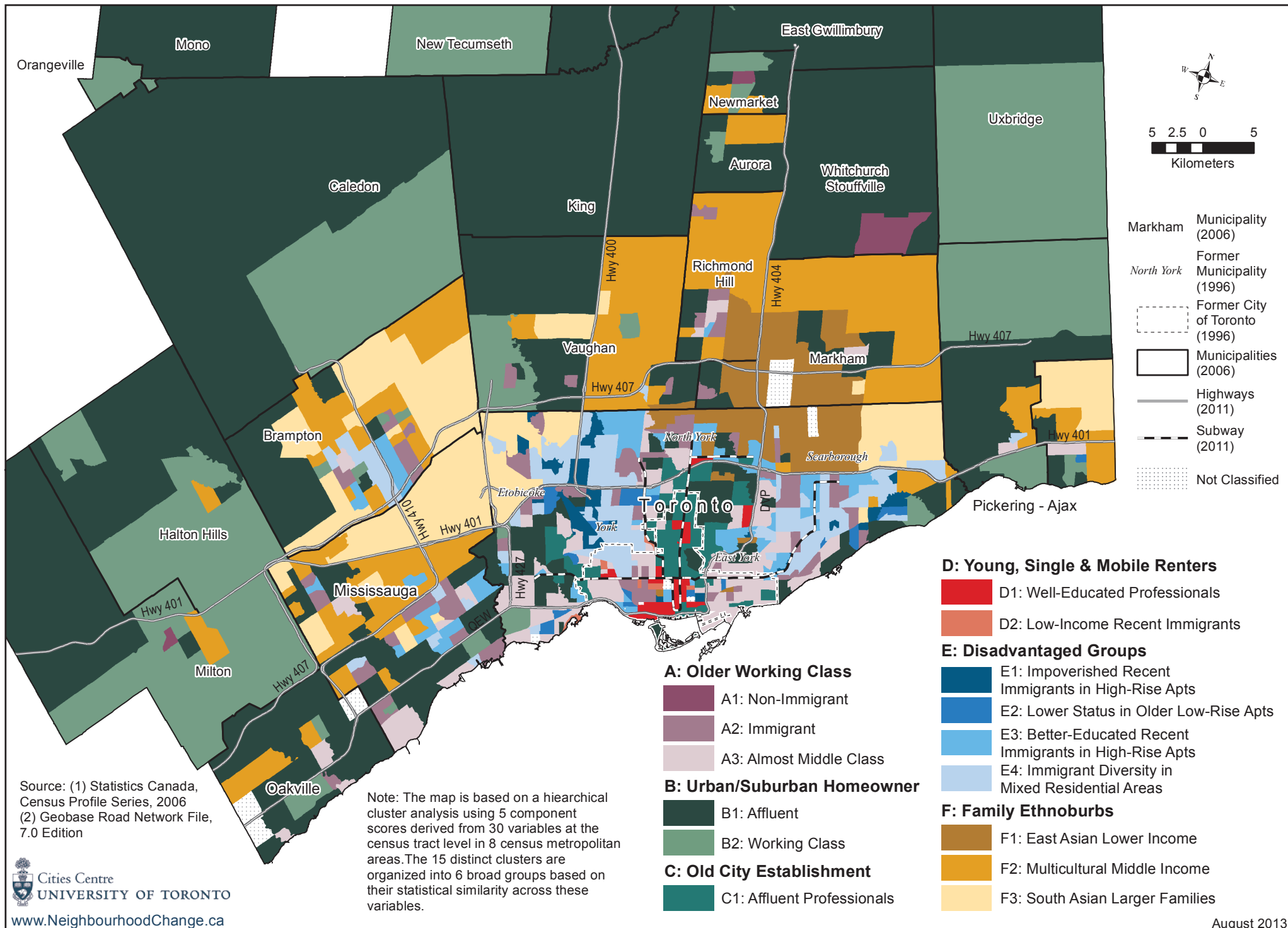
Montréal CMA: Typology of Neighbourhoods by Census Tracts, 2006



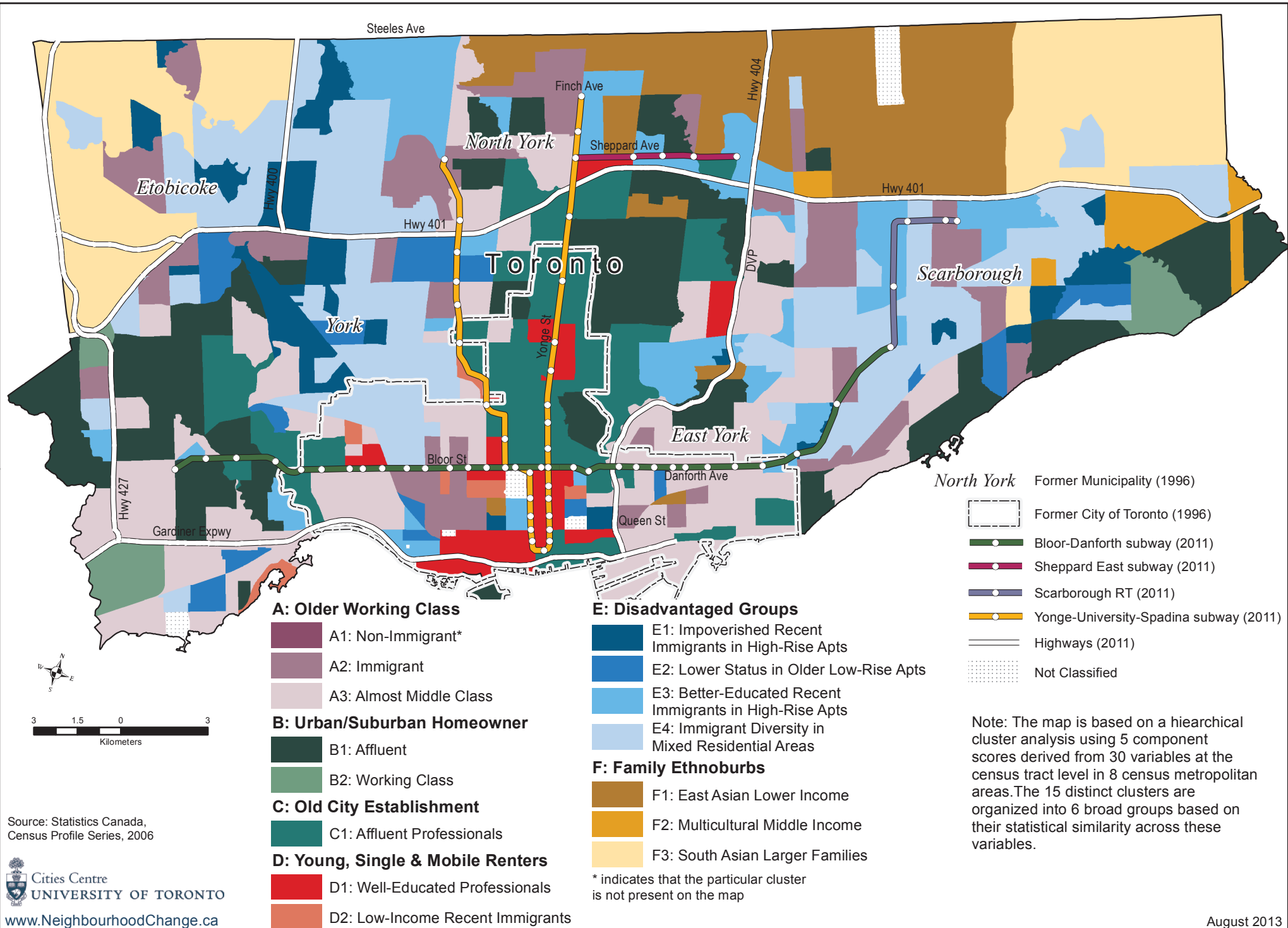
Ottawa - Gatineau CMA: Typology of Neighbourhoods by Census Tracts, 2006



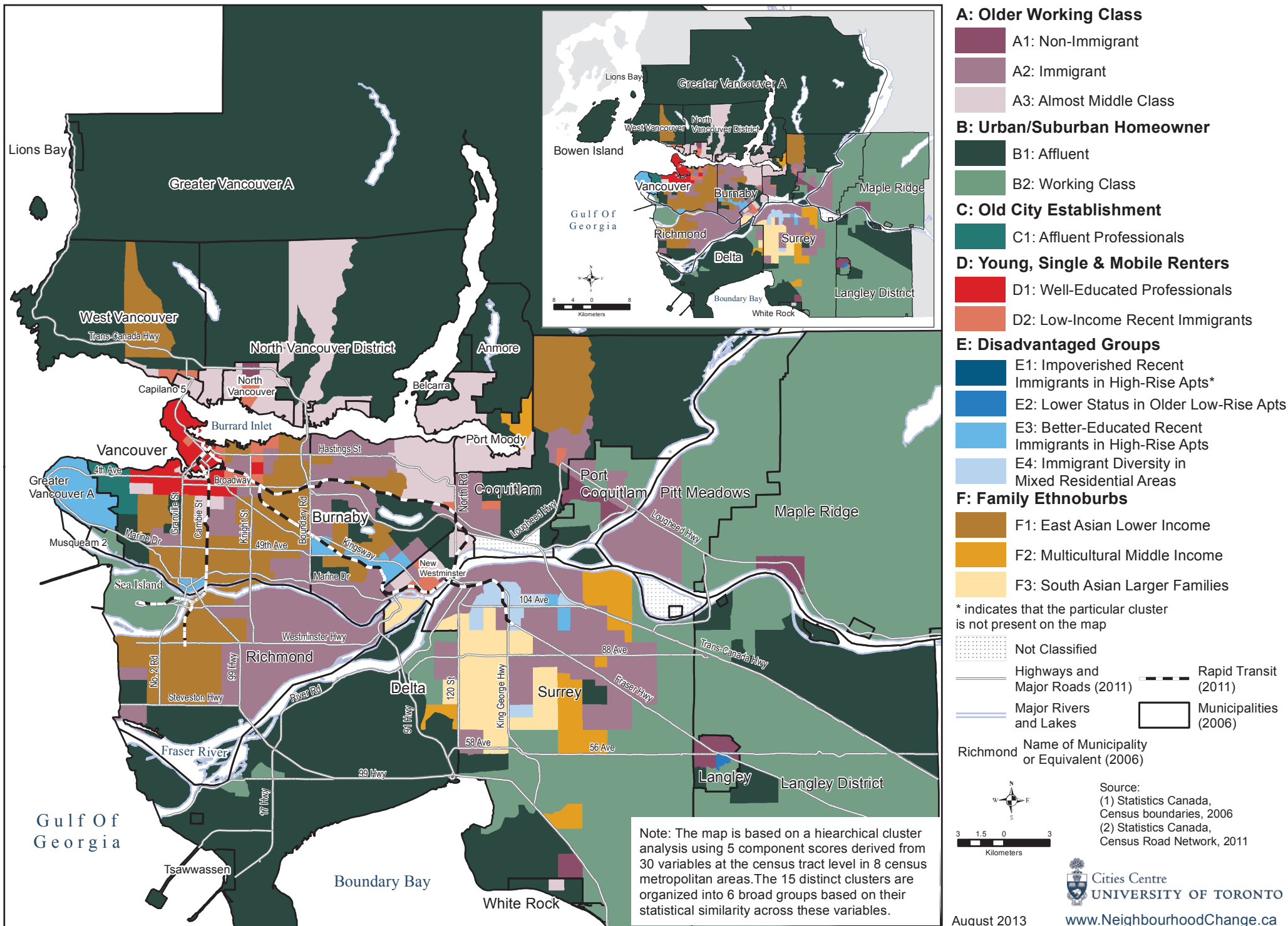
Toronto CMA: Typology of Neighbourhoods by Census Tracts, 2006



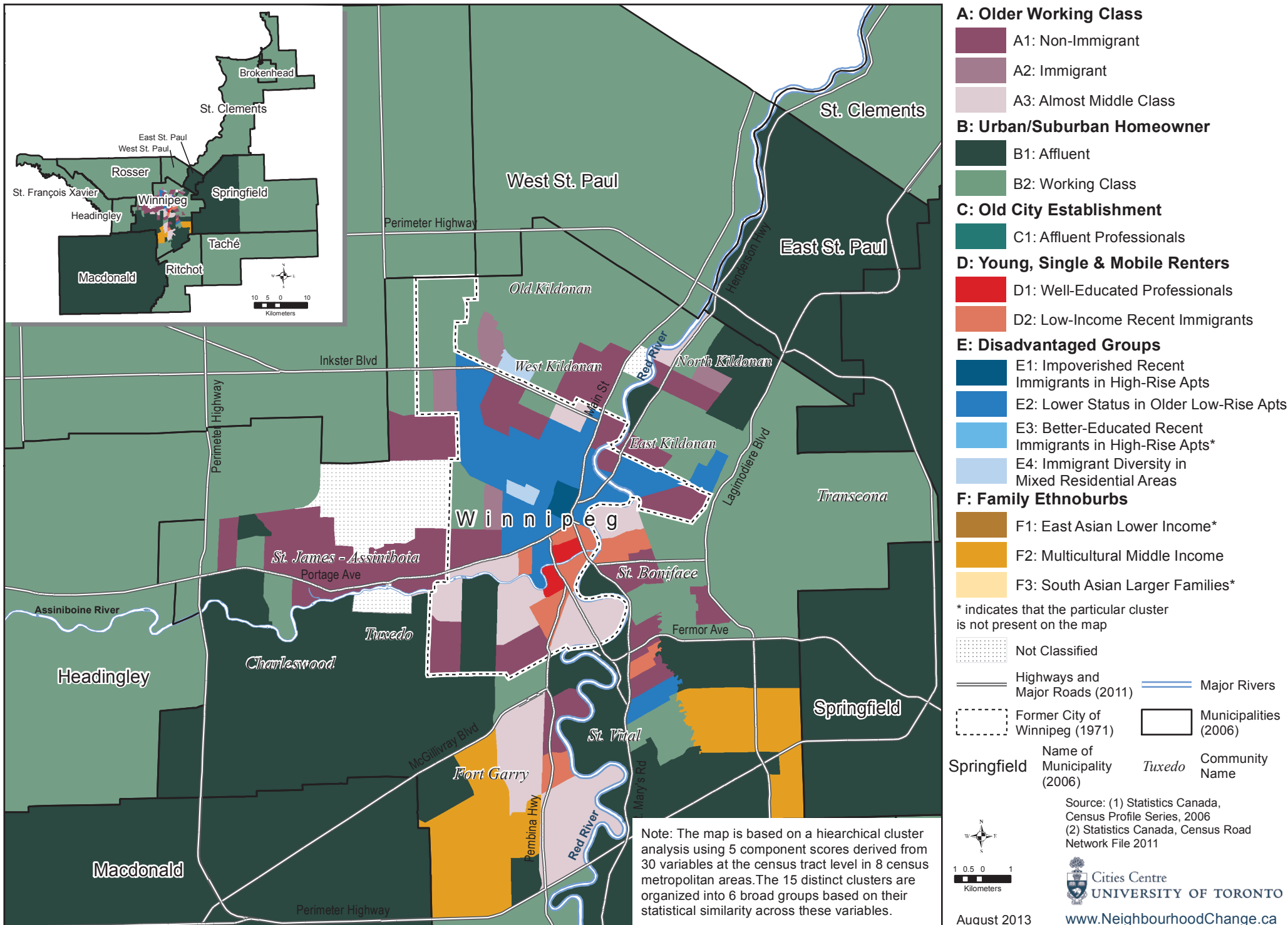
City of Toronto: Typology of Neighbourhoods by Census Tracts, 2006



Vancouver CMA: Typology of Neighbourhoods by Census Tracts, 2006



Winnipeg CMA: Typology of Neighbourhoods by Census Tracts, 2006



Eight Canadian Metropolitan Areas: A Typology of Neighbourhoods by Census Tracts, 2006

