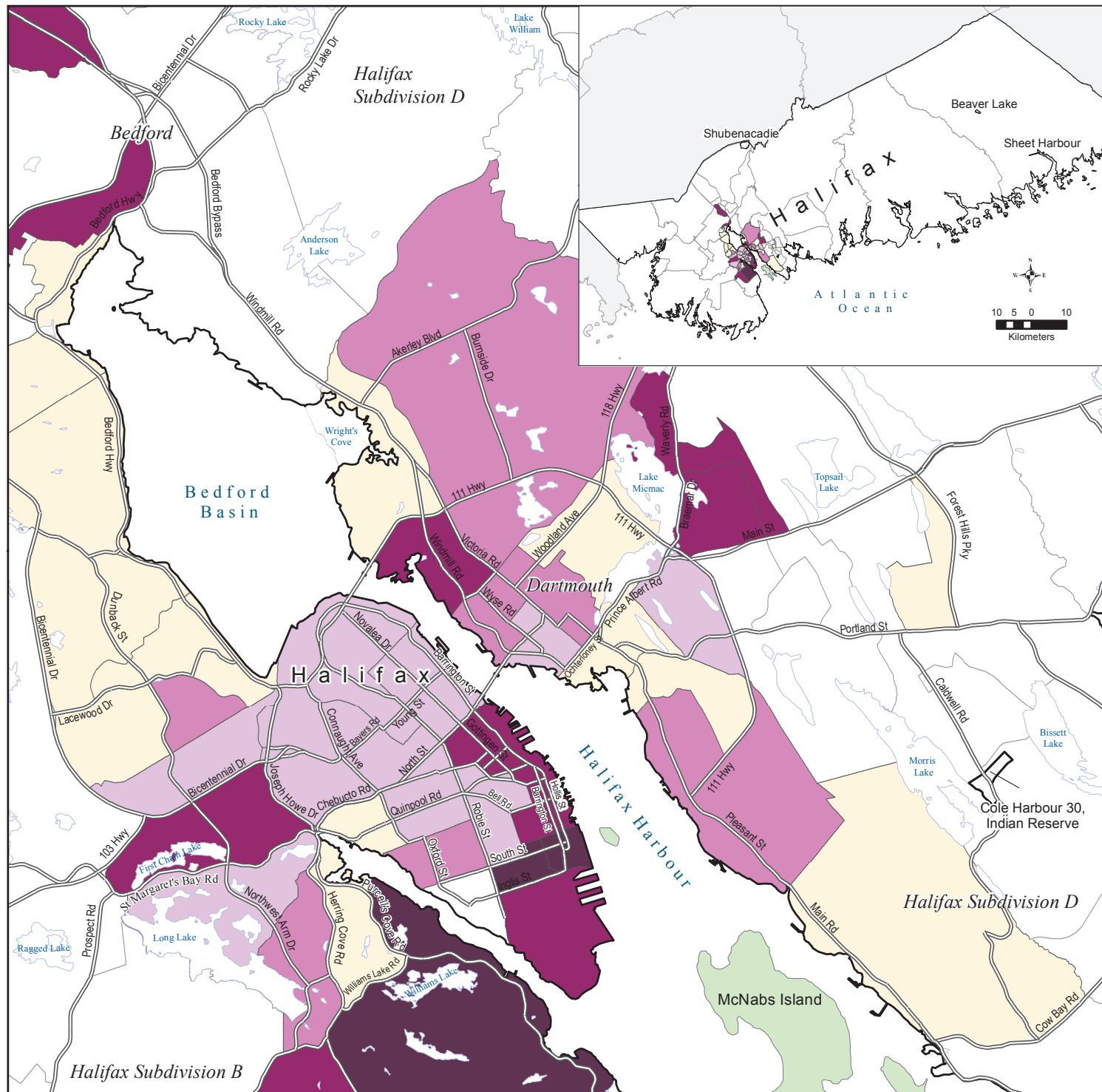


Rental Housing Disadvantage Index, Halifax Census Metropolitan Area, 2006



Rental Housing Disadvantage Index (RHD) by Census Tracts, 2006

- Least Disadvantaged (Less than 0.01)
- Low Disadvantage (0.01 to 0.25)
- Moderate Disadvantage (0.26 to 0.50)
- Highly Disadvantaged (0.51 to 1.00)
- Most Disadvantaged (1.01 to 1.30)

The RHD is Based on Four Standardized Indicators:

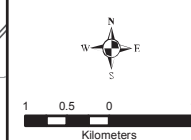
1. Average Renter Household Income (inverse of the z-scores)
2. Average Number of Persons Per Bedroom in Rented Dwellings
3. Percentage of Renter Households Paying 50% or More of Income on Rent
4. Percentage Rental Requiring Major Repairs

- Rental is Less than 25% of Total Dwellings or Not Available
- Municipalities (2006)
- Not Part of the CMA in 2006
- Highways and Major Roads (2011)
- Lakes
- Non-residential Islands

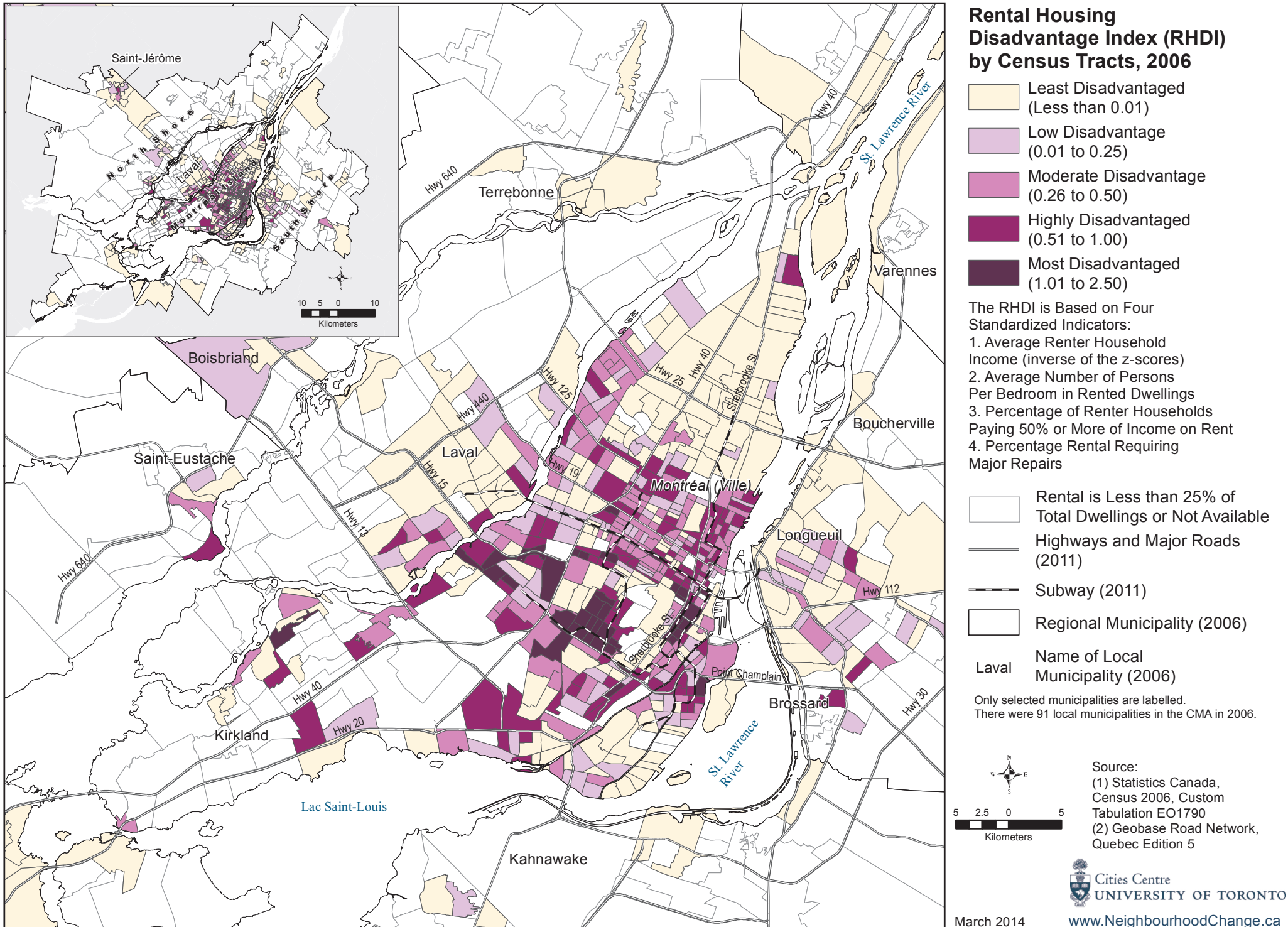
Cole Harbour 30
Name of Municipality or Equivalent (2006)

Dartmouth
Name of Former Municipality (1996)

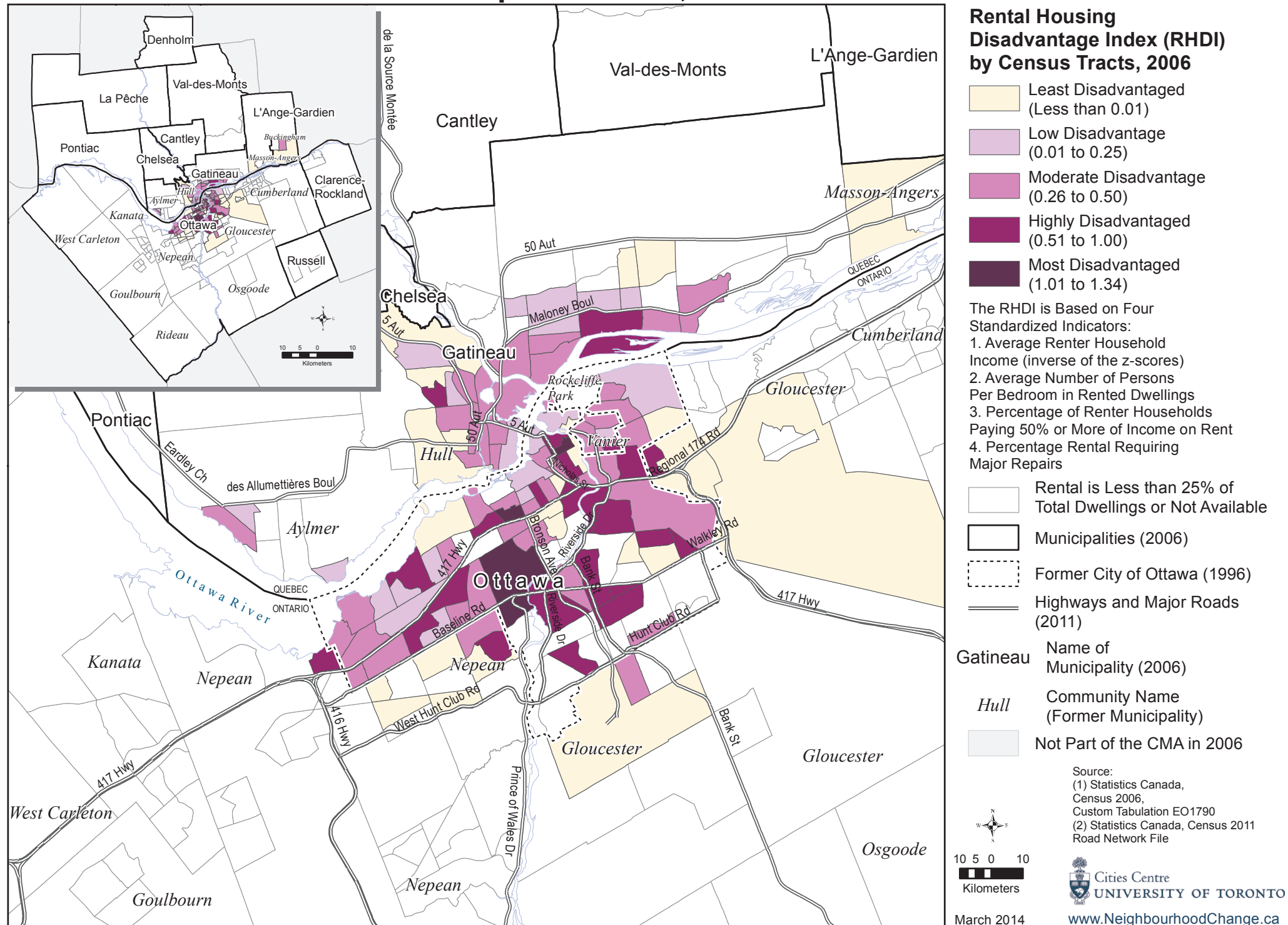
Source: (1) Statistics Canada, Census 2006, Custom Tabulation EO1790
(2) Statistics Canada, Census Road Network, 2011



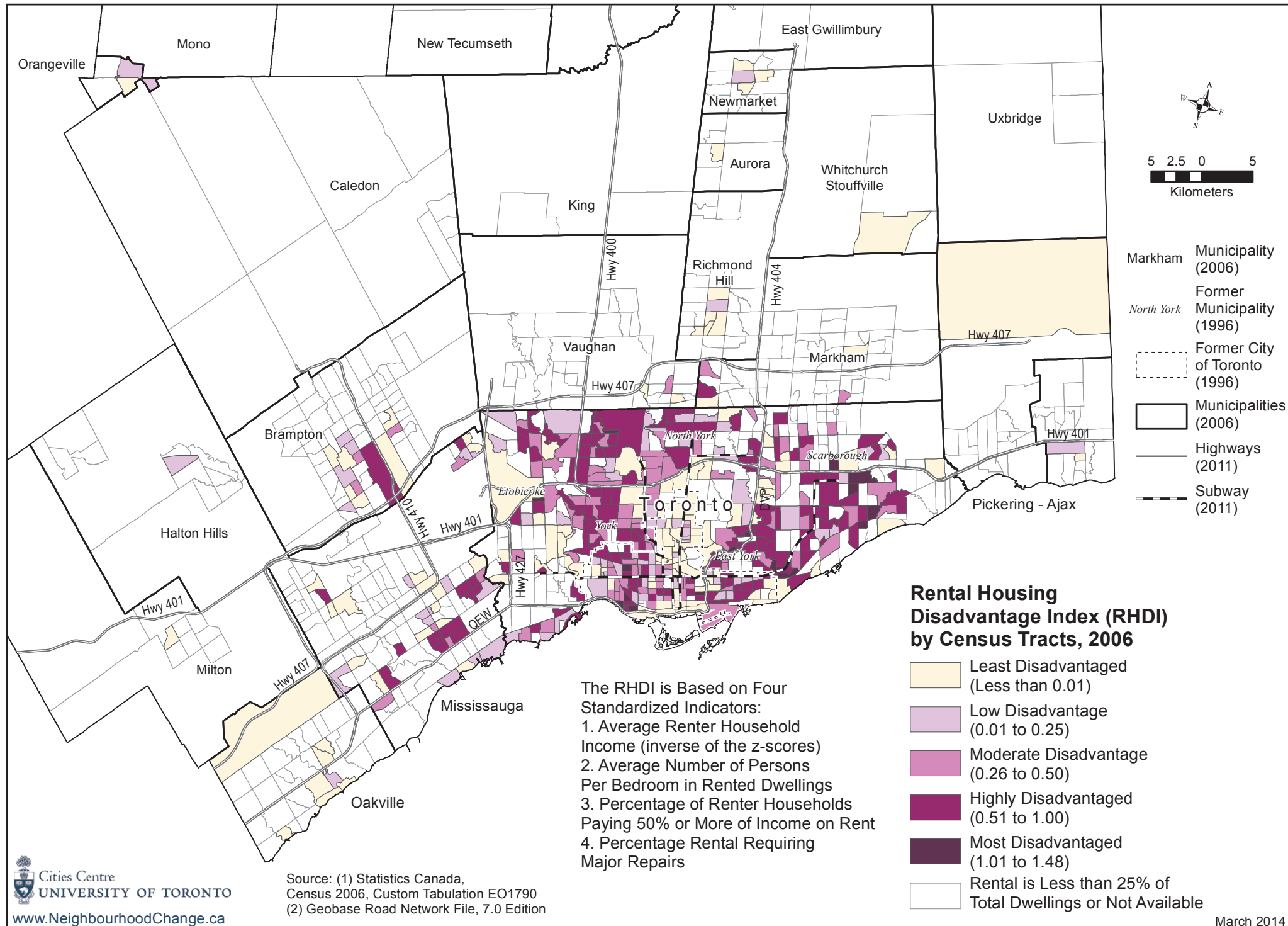
Rental Housing Disadvantage Index, Montréal Census Metropolitan Area, 2006



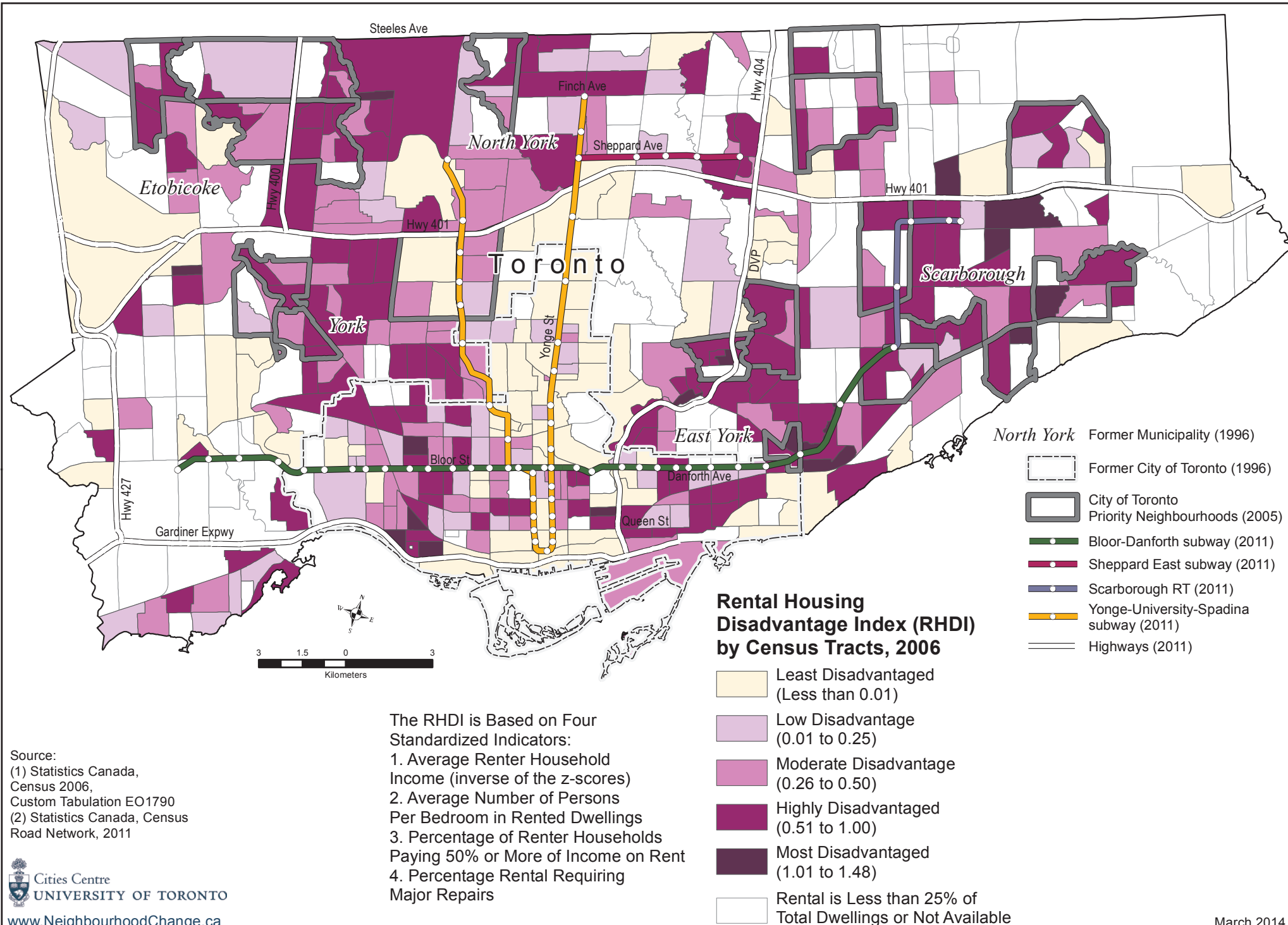
Rental Housing Disadvantage Index, Ottawa - Gatineau Census Metropolitan Area, 2006



Rental Housing Disadvantage Index, Toronto Census Metropolitan Area, 2006



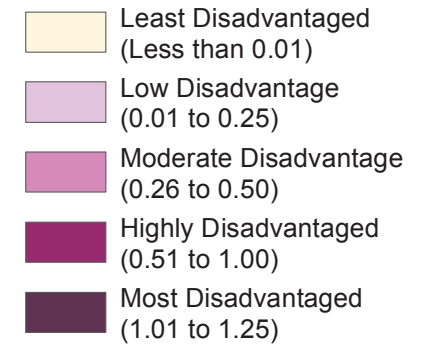
Rental Housing Disadvantage Index, City of Toronto, 2006



Rental Housing Disadvantage Index, Hamilton Census Metropolitan Area, 2006

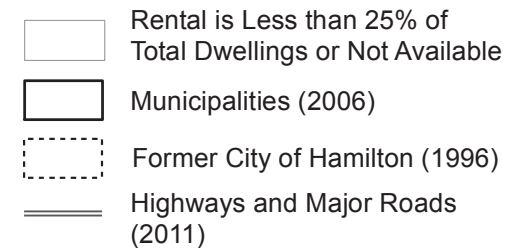


Rental Housing Disadvantage Index (RHD) by Census Tracts, 2006



The RHD is Based on Four Standardized Indicators:

1. Average Renter Household Income (inverse of the z-scores)
2. Average Number of Persons Per Bedroom in Rented Dwellings
3. Percentage of Renter Households Paying 50% or More of Income on Rent
4. Percentage Rental Requiring Major Repairs



Burlington Name of Municipality (2006)

Dundas Community Name (Former Municipality)

Source: (1) Statistics Canada, Census 2006, Custom Tabulation EO1790
(2) Statistics Canada, Census Road Network File 2011

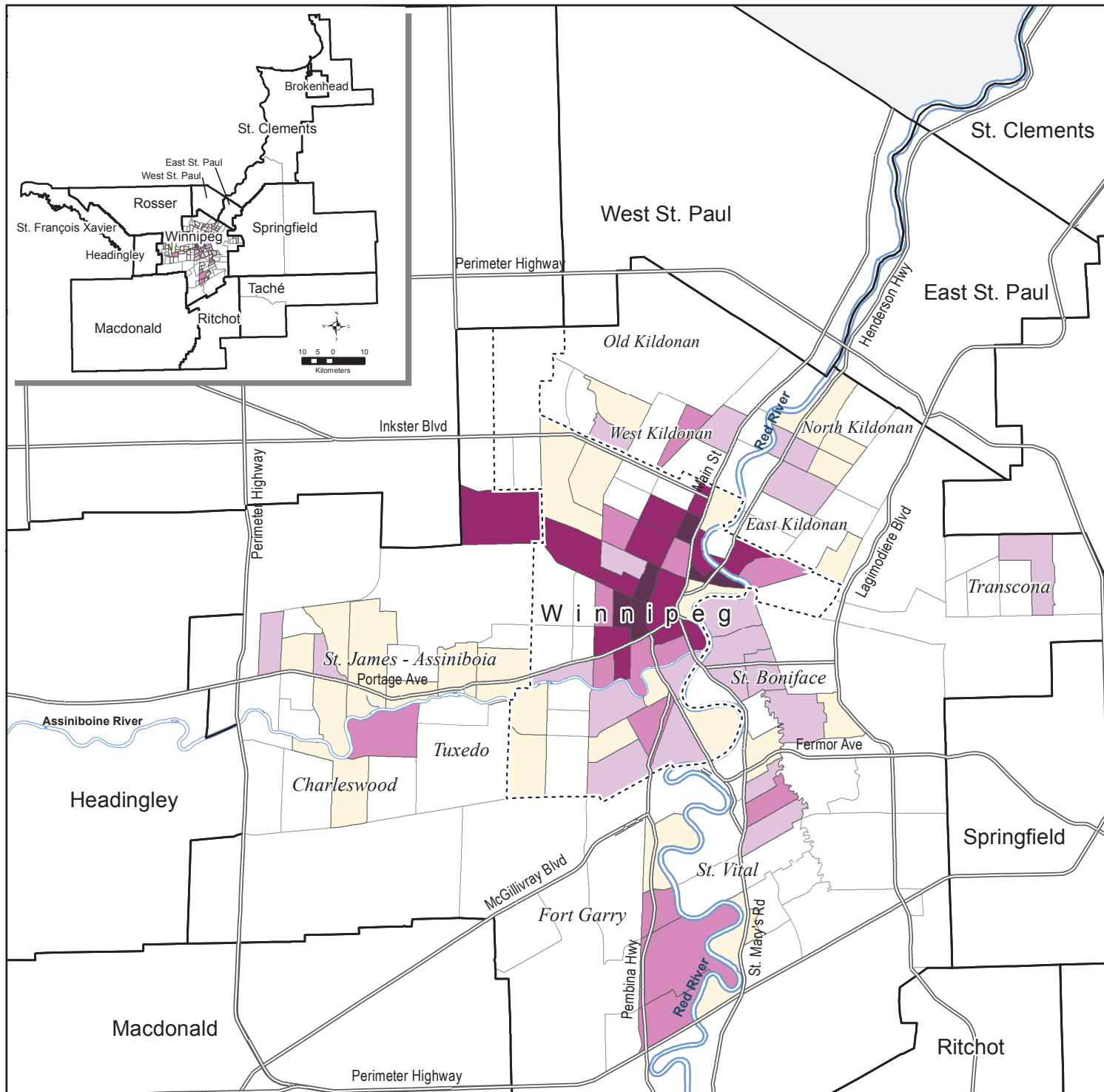


Cities Centre
UNIVERSITY OF TORONTO

March 2014

www.NeighbourhoodChange.ca

Rental Housing Disadvantage Index, Winnipeg Census Metropolitan Area, 2006



Rental Housing Disadvantage Index (RHD) by Census Tracts, 2006

- Least Disadvantaged (Less than 0.01)
- Low Disadvantage (0.01 to 0.25)
- Moderate Disadvantage (0.26 to 0.50)
- Highly Disadvantaged (0.51 to 1.00)
- Most Disadvantaged (1.01 to 1.18)

The RHD is Based on Four Standardized Indicators:

1. Average Renter Household Income (inverse of the z-scores)
2. Average Number of Persons Per Bedroom in Rented Dwellings
3. Percentage of Renter Households Paying 50% or More of Income on Rent
4. Percentage Rental Requiring Major Repairs

- Rental is Less than 25% of Total Dwellings or Not Available
- Municipalities (2006)
- Former City of Winnipeg (1971)
- Not Part of the CMA in 2006
- Highways and Major Roads (2011)
- Major Rivers

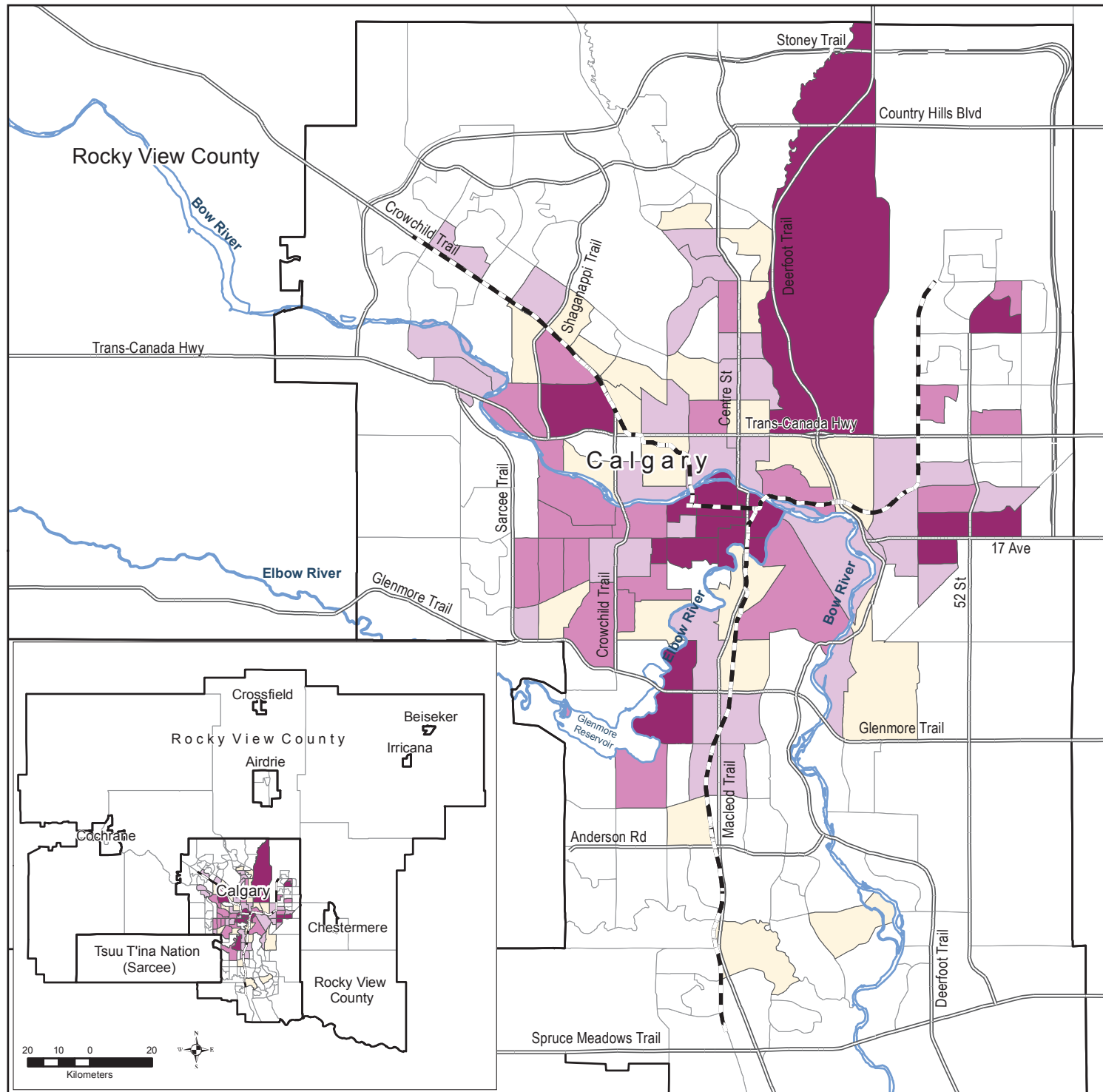
Springfield Name of Municipality (2006)
Transcona Community Name (Former Municipality)

Source:
(1) Statistics Canada, Census 2006, Custom Tabulation EO1790
(2) Statistics Canada, Census Road Network File 2011



1 0.5 0 1
Kilometers

Rental Housing Disadvantage Index, Calgary Census Metropolitan Area, 2006



Rental Housing Disadvantage Index (RHD) by Census Tracts, 2006

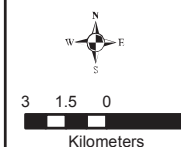
- Least Disadvantaged (Less than 0.01)
- Low Disadvantage (0.01 to 0.25)
- Moderate Disadvantage (0.26 to 0.50)
- Highly Disadvantaged (0.51 to 0.96)

The RHD is Based on Four Standardized Indicators:

1. Average Renter Household Income (inverse of the z-scores)
2. Average Number of Persons Per Bedroom in Rented Dwellings
3. Percentage of Renter Households Paying 50% or More of Income on Rent
4. Percentage Rental Requiring Major Repairs

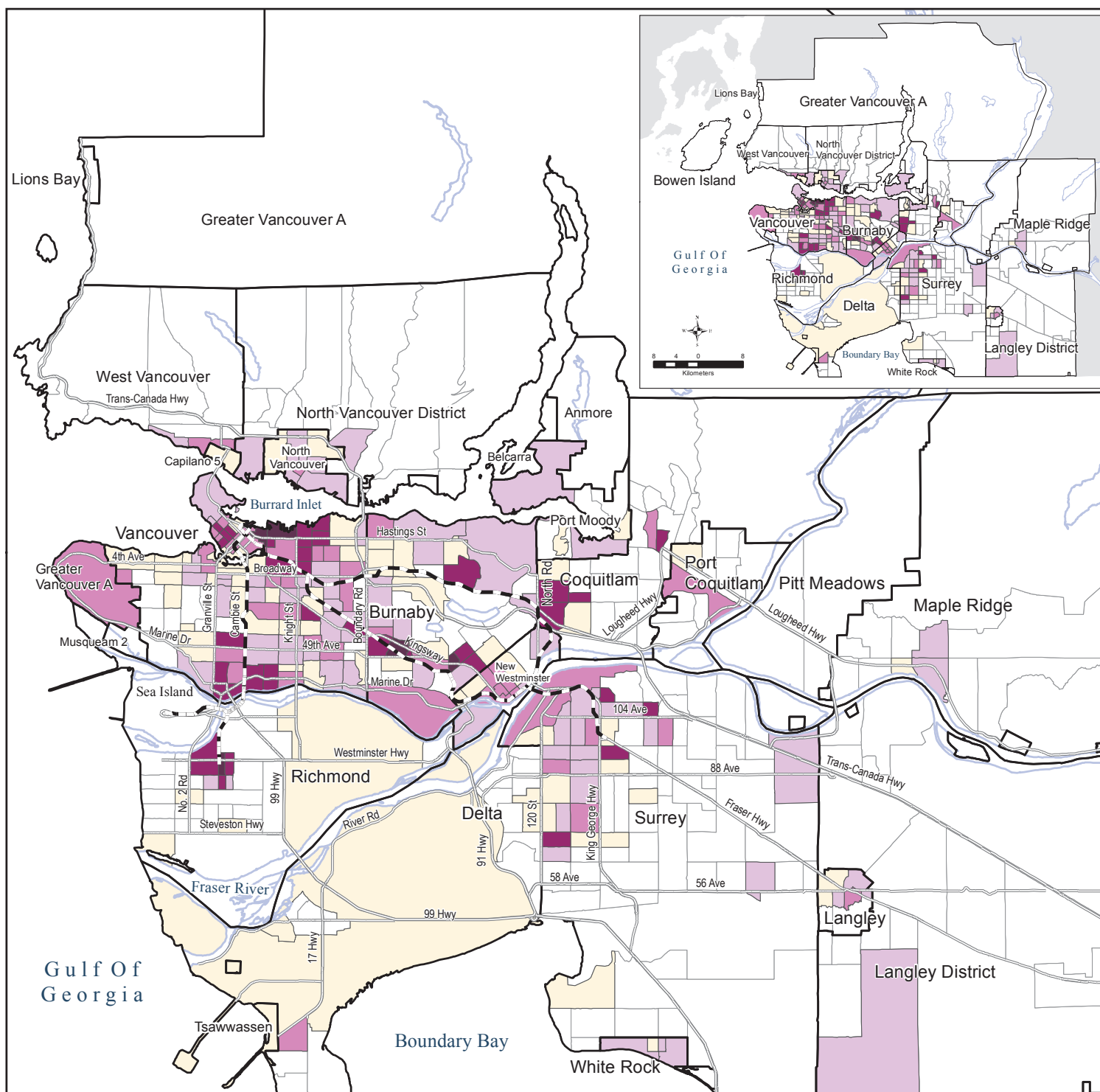
- Rental is Less than 25% of Total Dwellings or Not Available
- Municipalities (2006)
- Highways and Major Roads (2011)
- Rapid Transit (2011)
- Major Rivers

Rocky View Name of Municipality (2006)

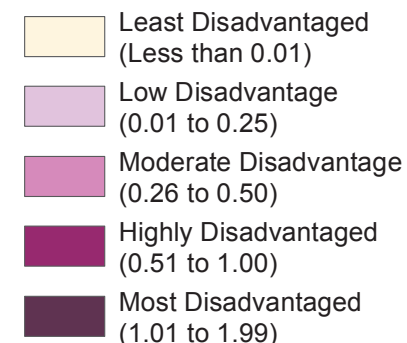


Source:
(1) Statistics Canada, Census 2006, Custom Tabulation EO1790
(2) Geobase Road Network, Alberta Edition 9

Rental Housing Disadvantage Index, Vancouver Census Metropolitan Area, 2006

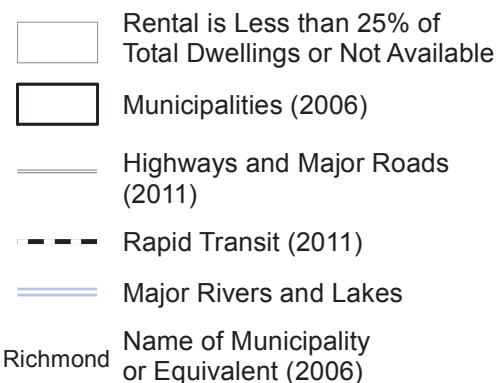


Rental Housing Disadvantage Index (RHD) by Census Tracts, 2006



The RHD is Based on Four Standardized Indicators:

1. Average Renter Household Income (inverse of the z-scores)
2. Average Number of Persons Per Bedroom in Rented Dwellings
3. Percentage of Renter Households Paying 50% or More of Income on Rent
4. Percentage Rental Requiring Major Repairs



Source:
 (1) Statistics Canada, Census 2006, Custom Tabulation EO1790
 (2) Statistics Canada, Census Road Network, 2011