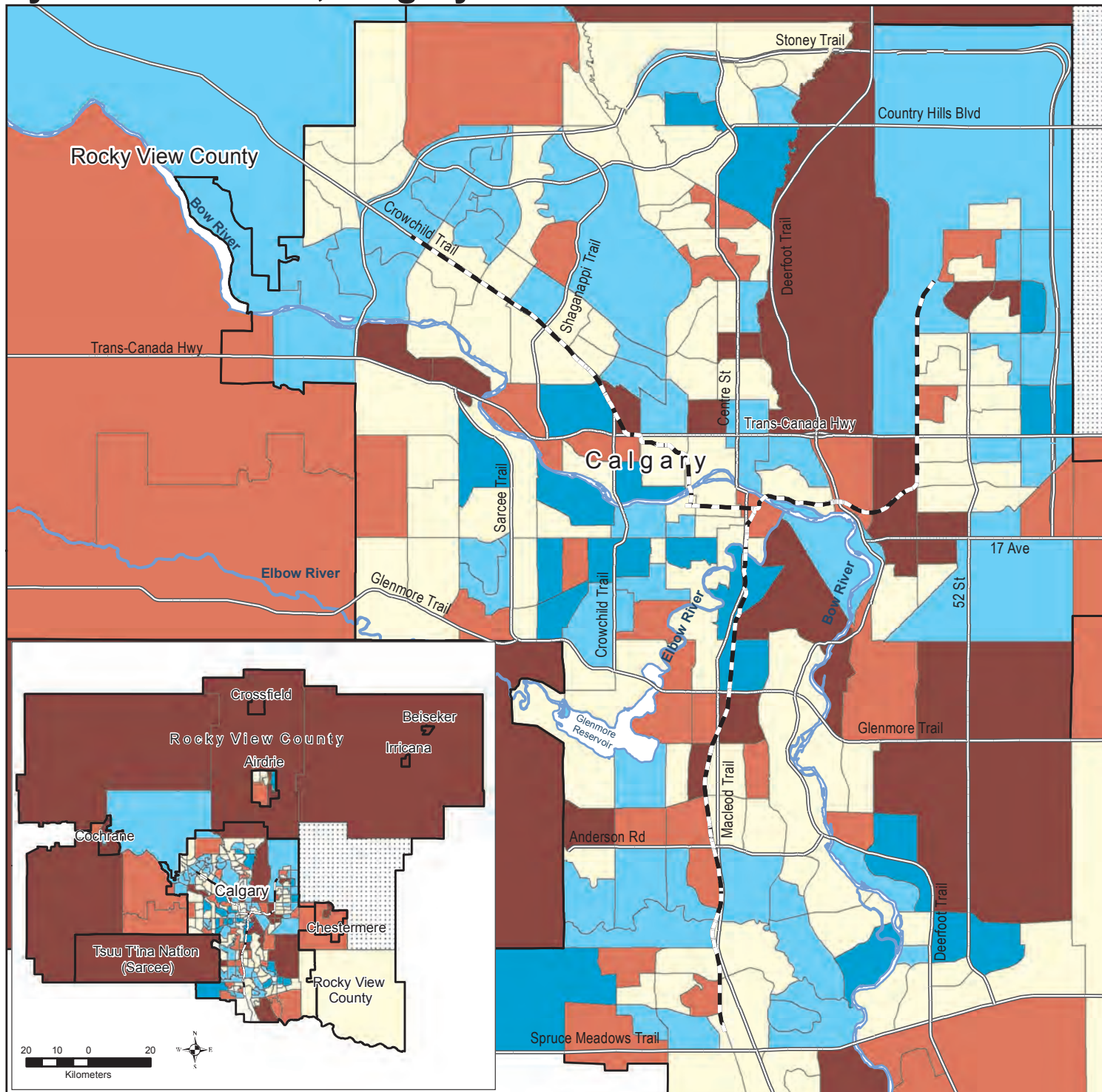


National Household Survey 2011, Global Non-Response Rate by Census Tracts, Calgary CMA



Census Tract Global Non-Response Rate

- Very High - 35% to 48.2%
- High - 30% to 34.9%
- Medium - 25% to 29.9%
- Low - 20% to 24.9%
- Very Low - 13.2% to 19.9%
- Not Released

Calgary CMA
Non-Response Rate: 23.6%

For the 2011 National Household Survey (NHS) estimates, the global non-response rate (GNR) is used as an indicator of data quality. This indicator combines complete non-response (household) and partial non-response (question) into a single rate. The value of the GNR is presented to users. A smaller GNR indicates a lower risk of non-response bias and as a result, lower risk of inaccuracy. The threshold used for estimates' suppression is a GNR of 50% or more. For more information, please refer to the National Household Survey User Guide, 2011.

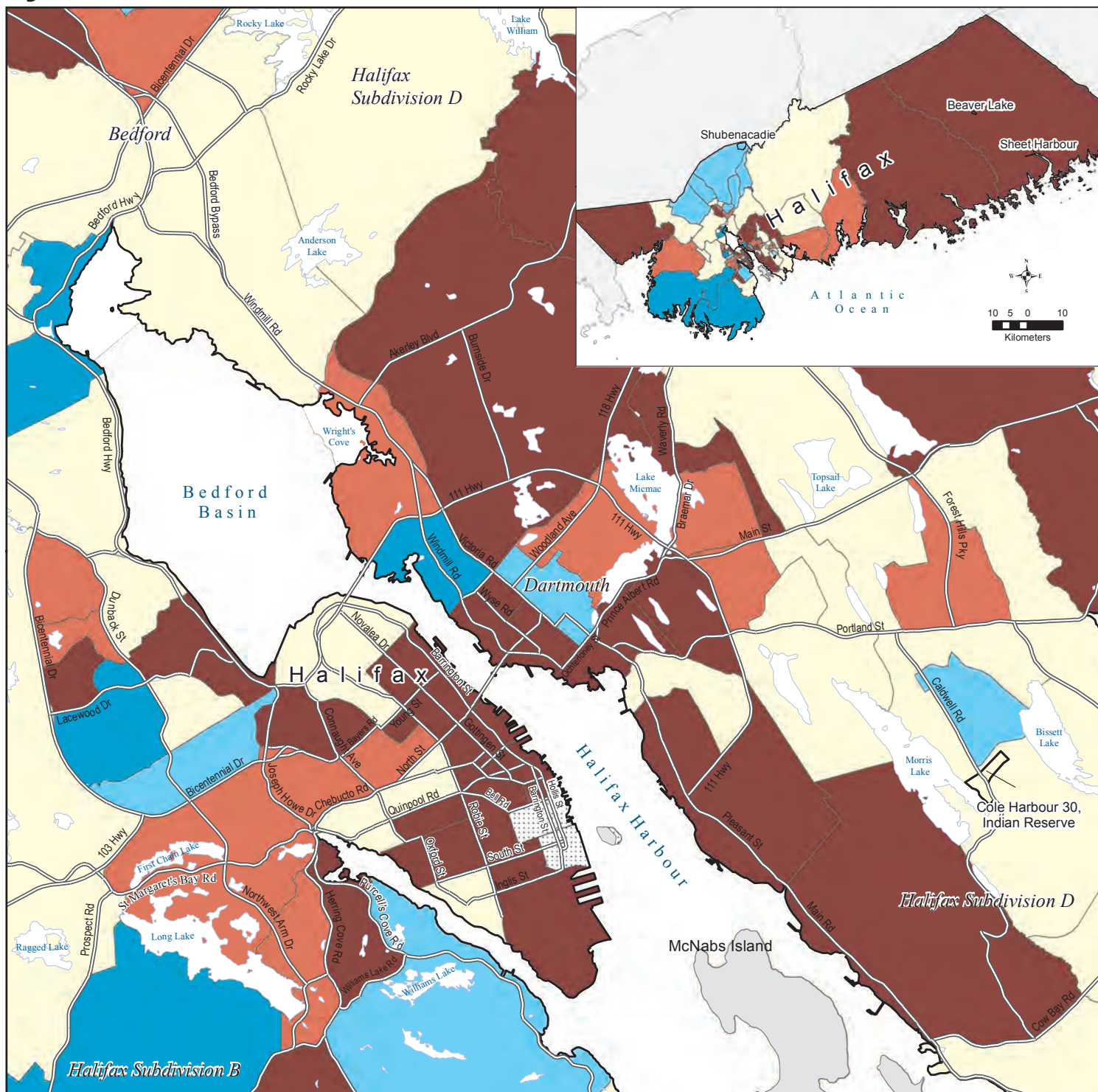
- Highways and Major Roads (2011)
- Rapid Transit (2011)
- Major Rivers
- Municipalities (2011)

Rocky View County Name of Municipality (2011)

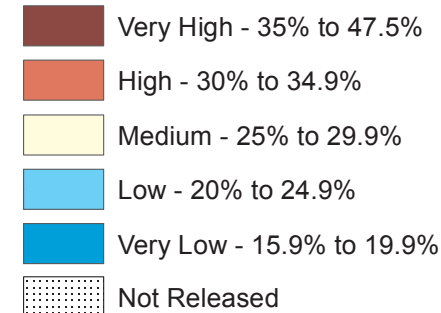
Source:
(1) Statistics Canada, National Household Survey, 2011
(2) Geobase Road Network, Alberta Edition 9

3 1.5 0 3
Kilometers

National Household Survey 2011, Global Non-Response Rate by Census Tracts, Halifax CMA



Census Tract Global Non-Response Rate



Halifax CMA
Non-Response Rate: 24.9%

For the 2011 National Household Survey (NHS) estimates, the global non-response rate (GNR) is used as an indicator of data quality. This indicator combines complete non-response (household) and partial non-response (question) into a single rate. The value of the GNR is presented to users. A smaller GNR indicates a lower risk of non-response bias and as a result, lower risk of inaccuracy. The threshold used for estimates' suppression is a GNR of 50% or more. For more information, please refer to the National Household Survey User Guide, 2011.



Cole Harbour 30
Dartmouth
Name of Municipality or Equivalent (2011)
Name of Former Municipality (1996)

Source: (1) Statistics Canada, National Household Survey, 2011
(2) Statistics Canada, Census Road Network, 2011



September 2013

www.NeighbourhoodChange.ca

National Household Survey 2011, Global Non-Response Rate by Census Tracts, Hamilton CMA



Census Tract Global Non-Response Rate

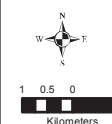
- Very High - 35% to 47.8%
- High - 30% to 34.9%
- Medium - 25% to 29.9%
- Low - 20% to 24.9%
- Very Low - 16.8% to 19.9%
- Not Released

Hamilton CMA
Non-Response Rate: 26.7%

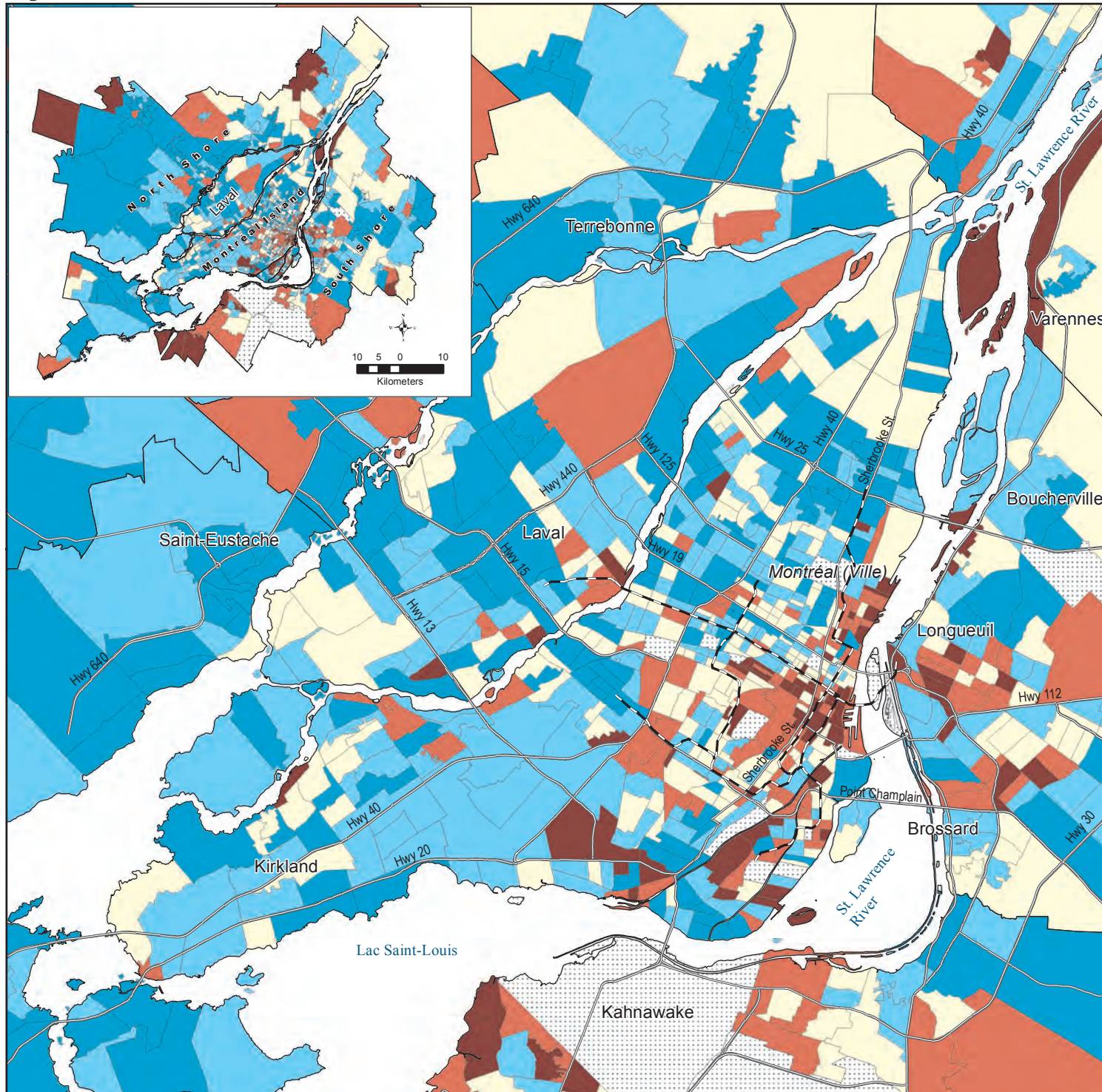
For the 2011 National Household Survey (NHS) estimates, the global non-response rate (GNR) is used as an indicator of data quality. This indicator combines complete non-response (household) and partial non-response (question) into a single rate. The value of the GNR is presented to users. A smaller GNR indicates a lower risk of non-response bias and as a result, lower risk of inaccuracy. The threshold used for estimates' suppression is a GNR of 50% or more. For more information, please refer to the National Household Survey User Guide, 2011.

- Highways and Major Roads (2011)
 - Former City of Hamilton (1996)
 - Municipalities (2011)
- | | |
|--|-------------------------------------|
| <p>Name of Municipality (2011)</p> <p>Burlington</p> | <p>Community Name</p> <p>Dundas</p> |
|--|-------------------------------------|

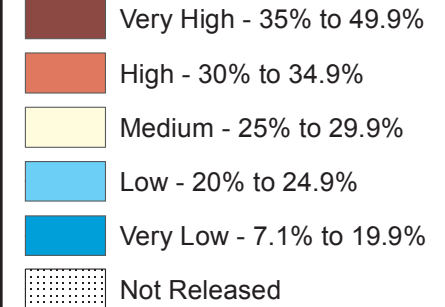
Source: (1) Statistics Canada, National Household Survey, 2011
(2) Statistics Canada, Census Road Network File 2011



National Household Survey 2011, Global Non-Response Rate by Census Tracts, Montréal CMA

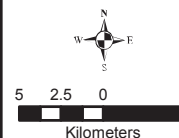


Census Tract Global Non-Response Rate



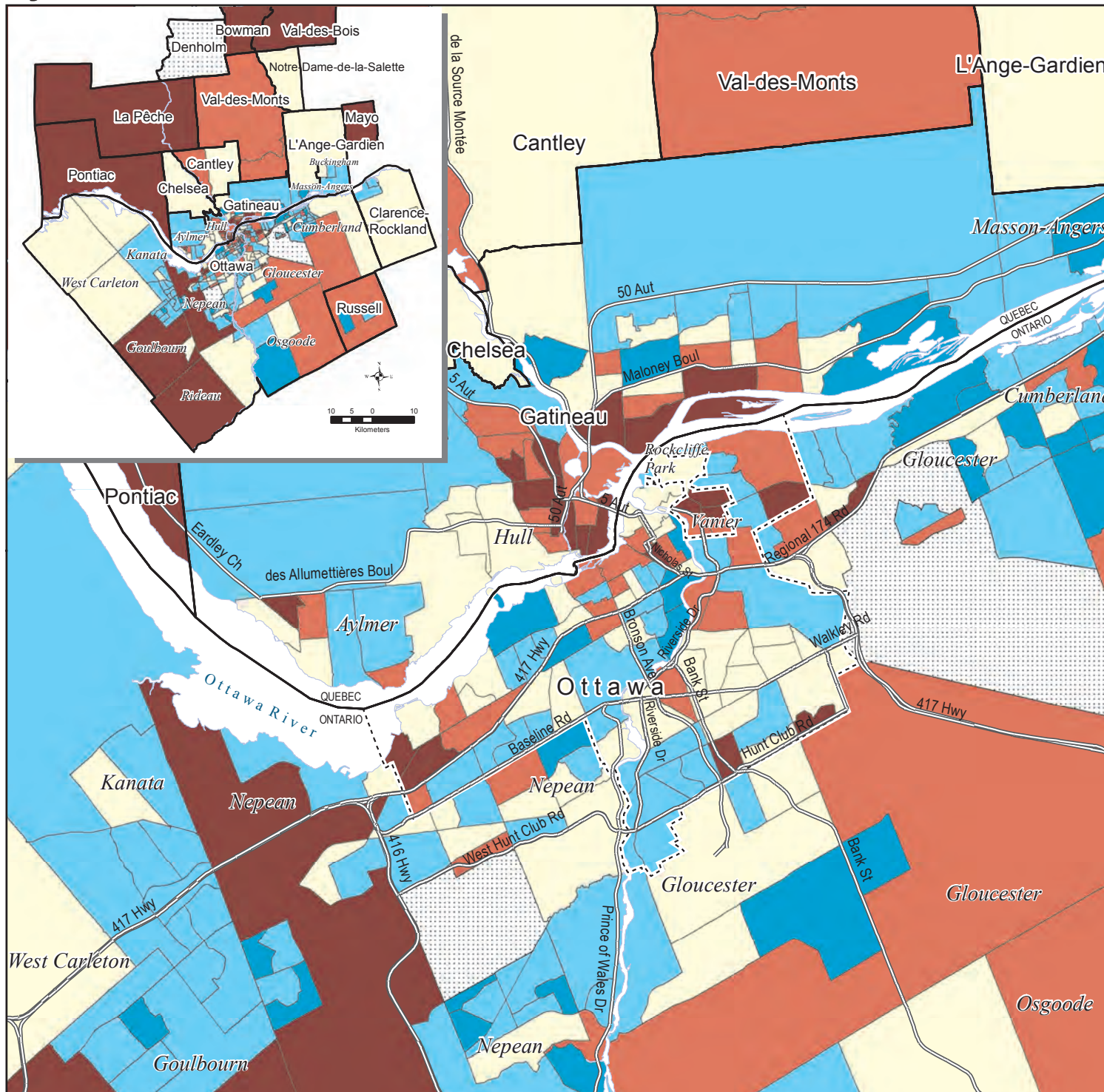
Montréal CMA
Non-Response Rate: 19.7%

For the 2011 National Household Survey (NHS) estimates, the global non-response rate (GNR) is used as an indicator of data quality. This indicator combines complete non-response (household) and partial non-response (question) into a single rate. The value of the GNR is presented to users. A smaller GNR indicates a lower risk of non-response bias and as a result, lower risk of inaccuracy. The threshold used for estimates' suppression is a GNR of 50% or more. For more information, please refer to the National Household Survey User Guide, 2011.



Source: (1) Statistics Canada, National Household Survey, 2011
(2) Geobase Road Network, Quebec Edition 5

National Household Survey 2011, Global Non-Response Rate by Census Tracts, Ottawa - Gatineau CMA



Census Tract Global Non-Response Rate

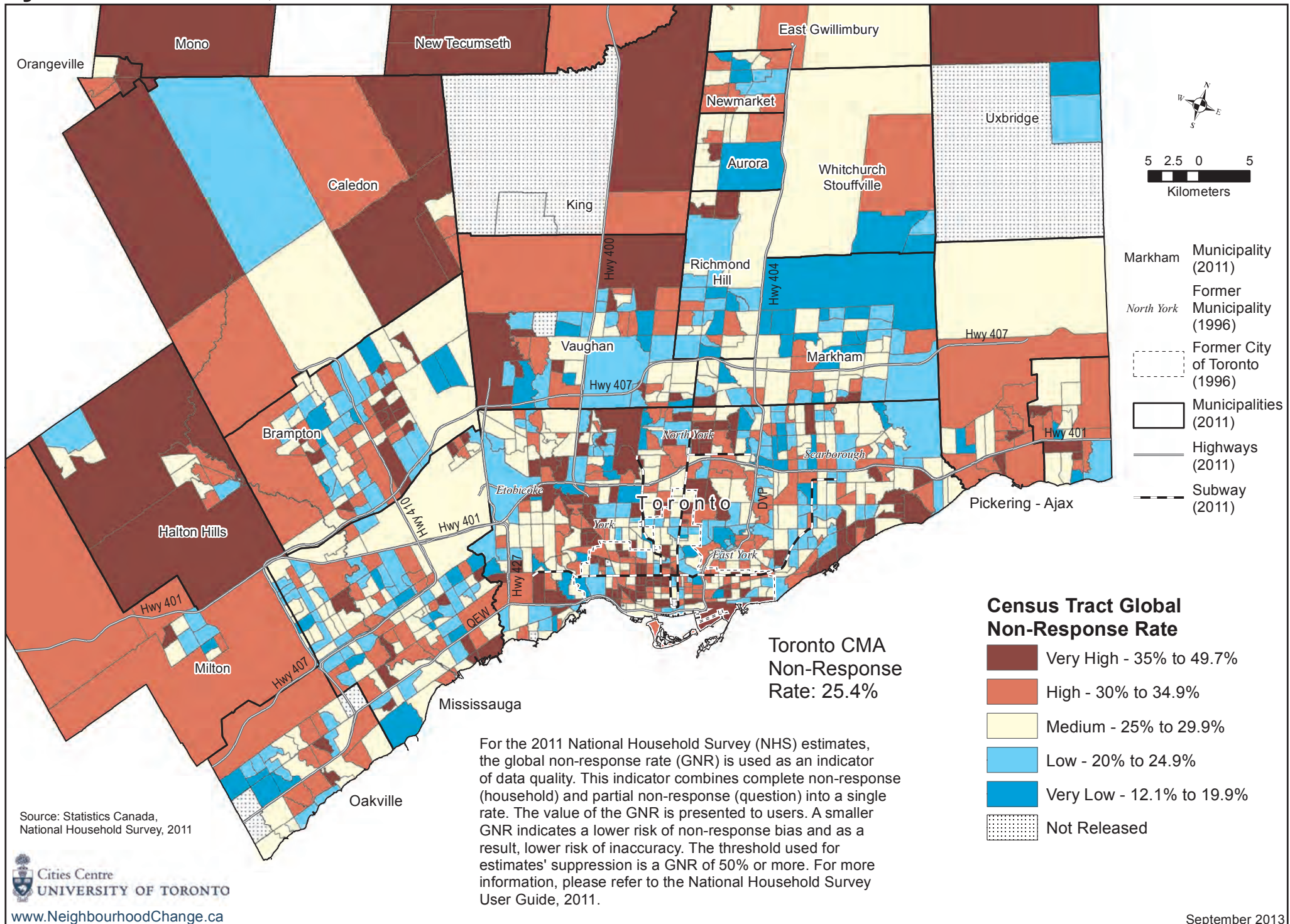
- Very High - 35% to 48%
- High - 30% to 34.9%
- Medium - 25% to 29.9%
- Low - 20% to 24.9%
- Very Low - 13.9% to 19.9%
- Not Released

Ottawa - Gatineau CMA
Non-Response Rate: 22.3%

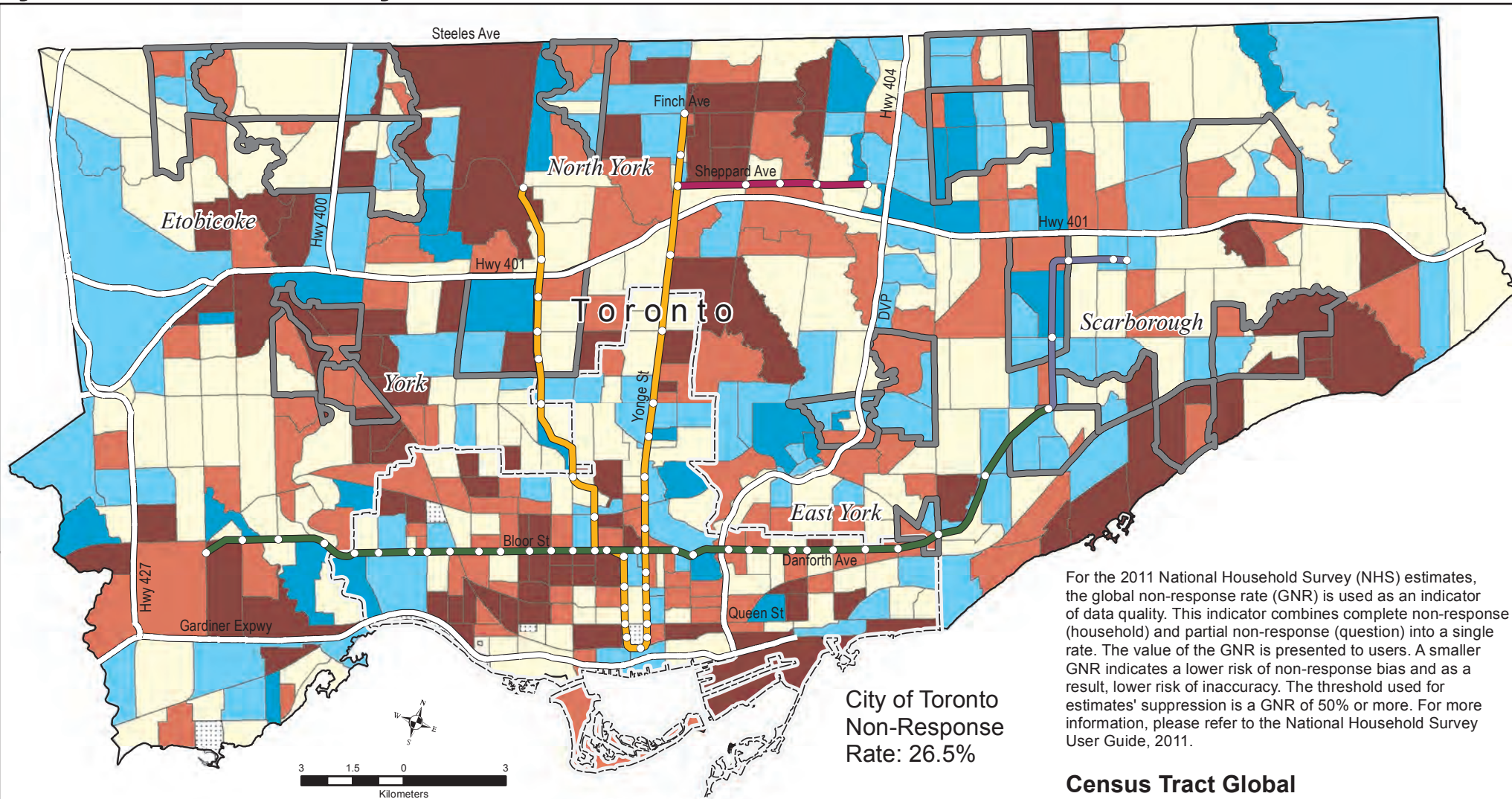
For the 2011 National Household Survey (NHS) estimates, the global non-response rate (GNR) is used as an indicator of data quality. This indicator combines complete non-response (household) and partial non-response (question) into a single rate. The value of the GNR is presented to users. A smaller GNR indicates a lower risk of non-response bias and as a result, lower risk of inaccuracy. The threshold used for estimates' suppression is a GNR of 50% or more. For more information, please refer to the National Household Survey User Guide, 2011.

- Highways and Major Roads (2011)
- Former City of Ottawa (1996)
- Municipalities (2011)
- Name of Municipality (2011)
- Community Name

National Household Survey 2011, Global Non-Response Rate by Census Tracts, Toronto CMA

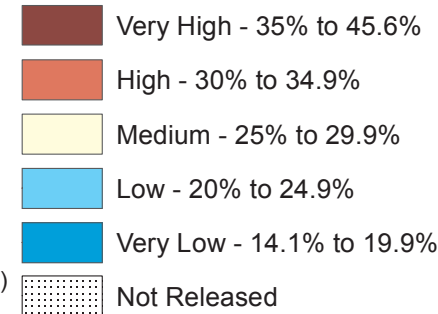


National Household Survey 2011, Global Non-Response Rate by Census Tracts, City of Toronto



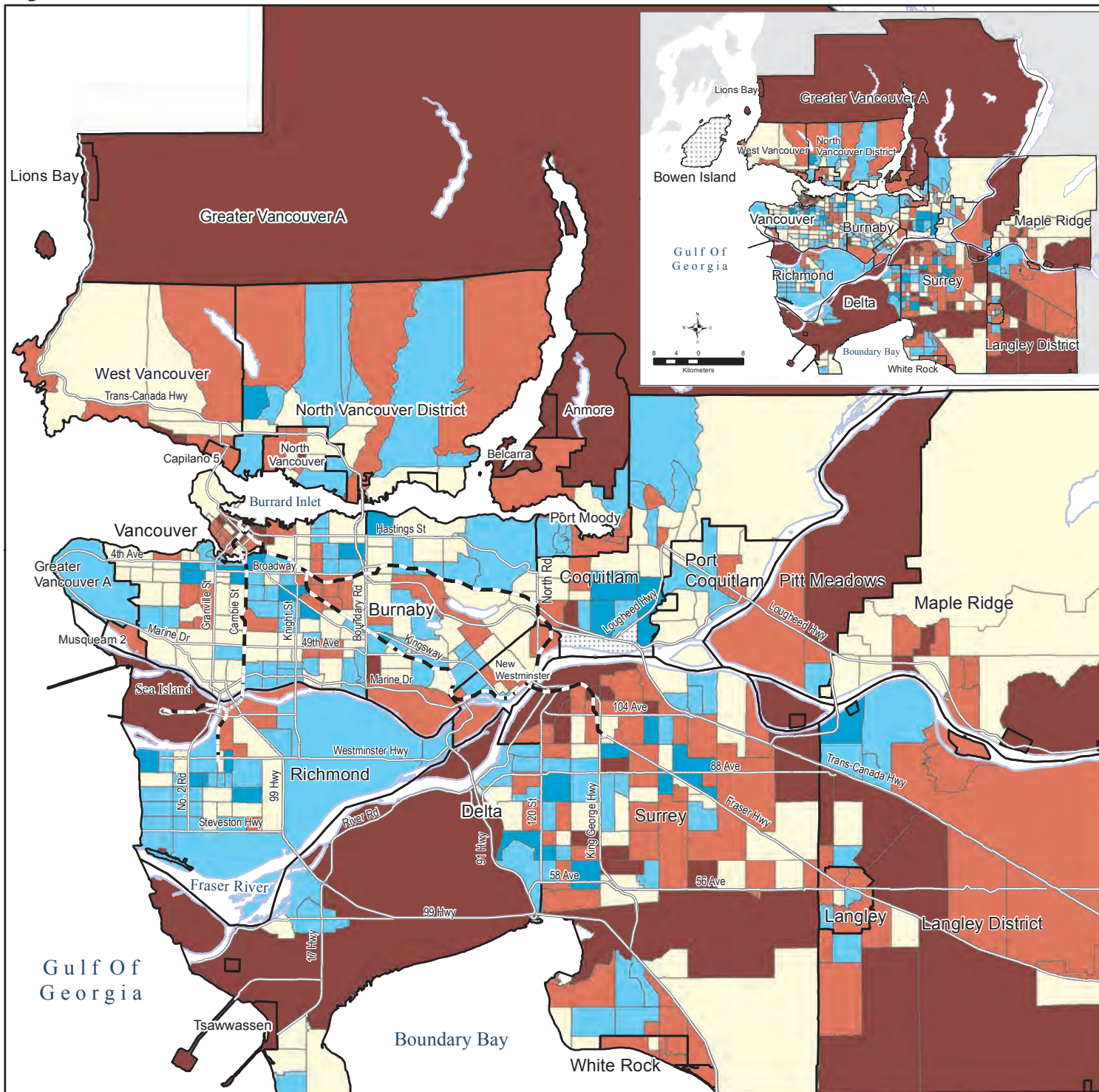
For the 2011 National Household Survey (NHS) estimates, the global non-response rate (GNR) is used as an indicator of data quality. This indicator combines complete non-response (household) and partial non-response (question) into a single rate. The value of the GNR is presented to users. A smaller GNR indicates a lower risk of non-response bias and as a result, lower risk of inaccuracy. The threshold used for estimates' suppression is a GNR of 50% or more. For more information, please refer to the National Household Survey User Guide, 2011.

Census Tract Global Non-Response Rate

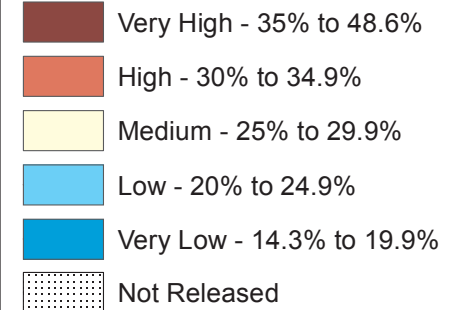


Source: Statistics Canada,
National Household Survey, 2011

National Household Survey 2011, Global Non-Response Rate by Census Tracts, Vancouver CMA



Census Tract Global Non-Response Rate

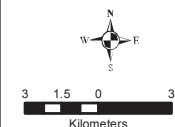


Vancouver CMA
Non-Response Rate: 24.4%

For the 2011 National Household Survey (NHS) estimates, the global non-response rate (GNR) is used as an indicator of data quality. This indicator combines complete non-response (household) and partial non-response (question) into a single rate. The value of the GNR is presented to users. A smaller GNR indicates a lower risk of non-response bias and as a result, lower risk of inaccuracy. The threshold used for estimates' suppression is a GNR of 50% or more. For more information, please refer to the National Household Survey User Guide, 2011.

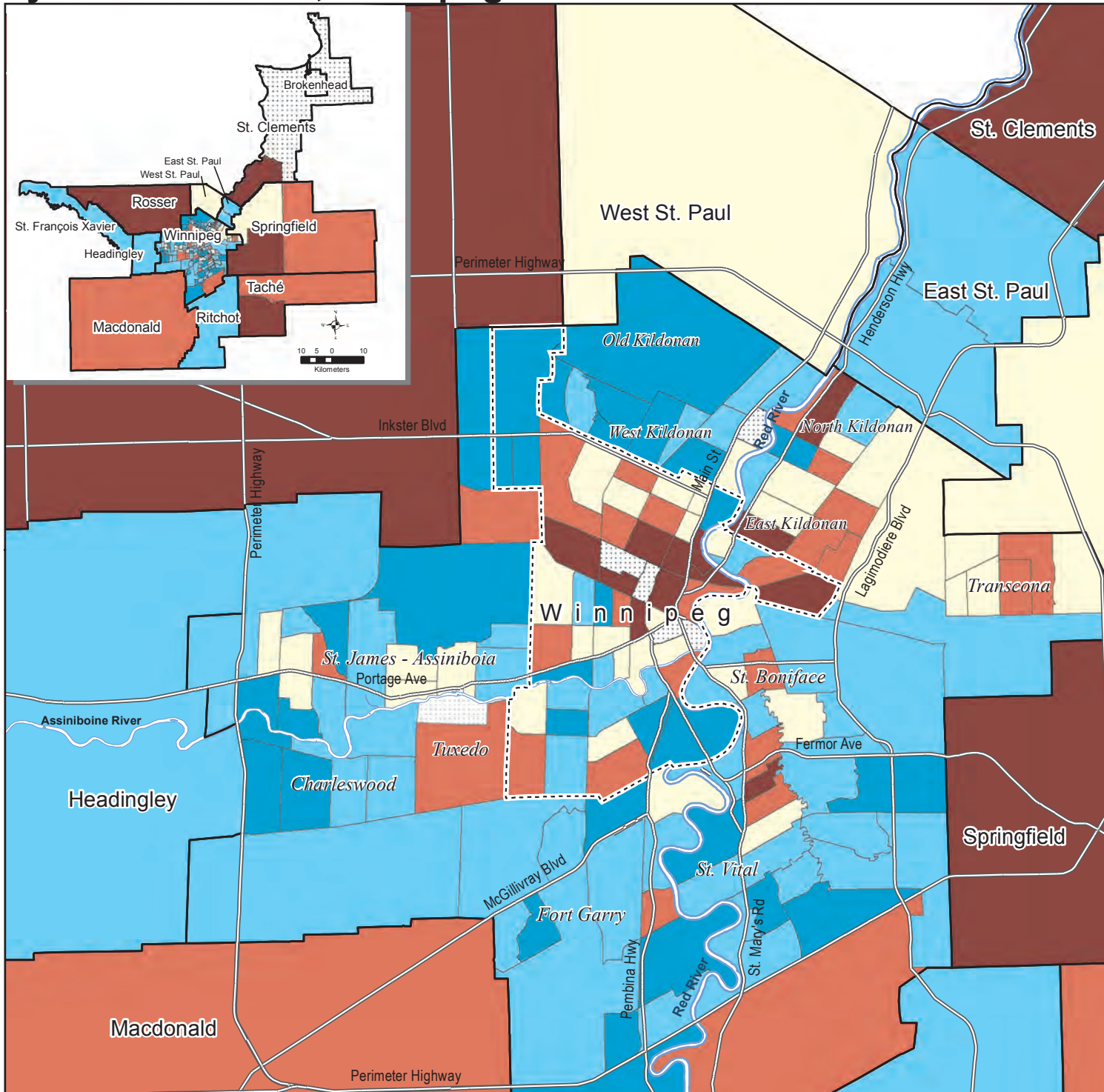


Richmond Name of Municipality or Equivalent (2011)



Source:
(1) Statistics Canada, National Household Survey, 2011
(2) Statistics Canada, Census Road Network, 2011

National Household Survey 2011, Global Non-Response Rate by Census Tracts, Winnipeg CMA



Census Tract Global Non-Response Rate

- Very High - 35% to 49.3%
- High - 30% to 34.9%
- Medium - 25% to 29.9%
- Low - 20% to 24.9%
- Very Low - 12.3% to 19.9%
- Not Released

Winnipeg CMA
Non-Response Rate: 21.9%

For the 2011 National Household Survey (NHS) estimates, the global non-response rate (GNR) is used as an indicator of data quality. This indicator combines complete non-response (household) and partial non-response (question) into a single rate. The value of the GNR is presented to users. A smaller GNR indicates a lower risk of non-response bias and as a result, lower risk of inaccuracy. The threshold used for estimates' suppression is a GNR of 50% or more. For more information, please refer to the National Household Survey User Guide, 2011.

- Highways and Major Roads (2011)
- Major Rivers
- Former City of Winnipeg (1971)
- Municipalities (2011)
- Springfield** Name of Municipality (2011)
- Tuxedo** Community Name

Source: (1) Statistics Canada, National Household Survey, 2011
(2) Statistics Canada, Census Road Network File 2011

