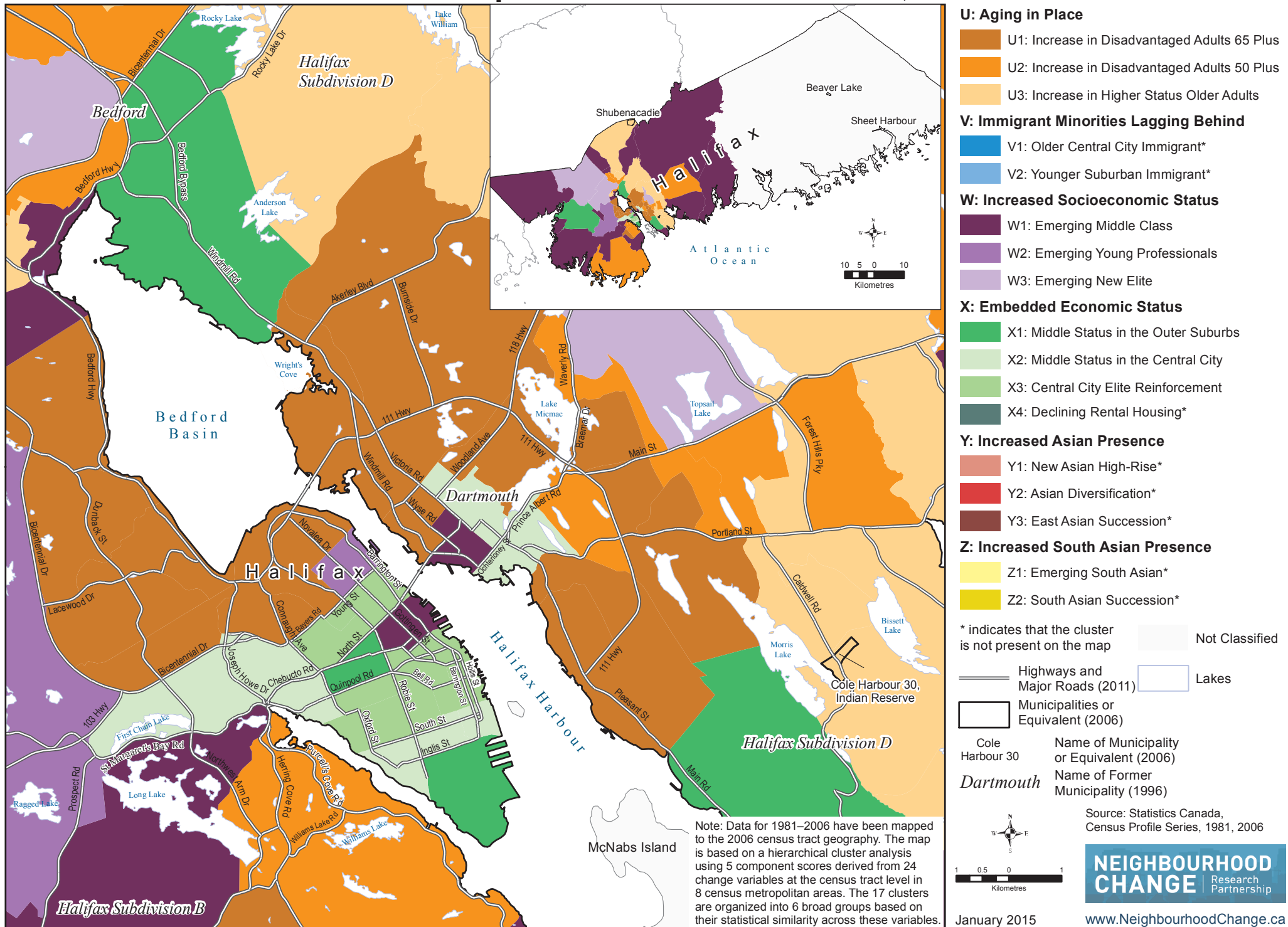


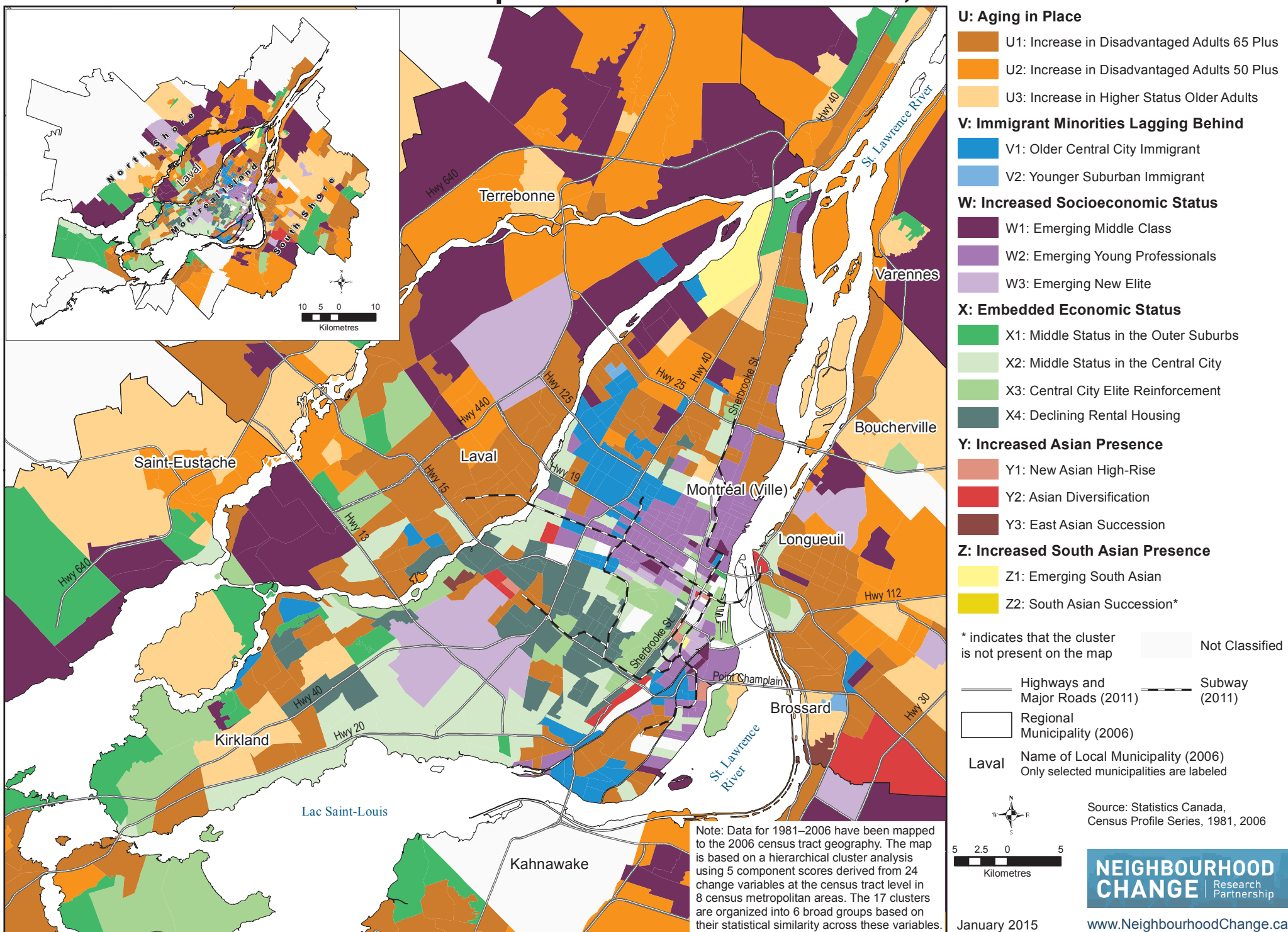
Halifax CMA: Typology of Neighbourhood Change by Census Tracts

Based on Six Groups and Seventeen Clusters, 1981–2006



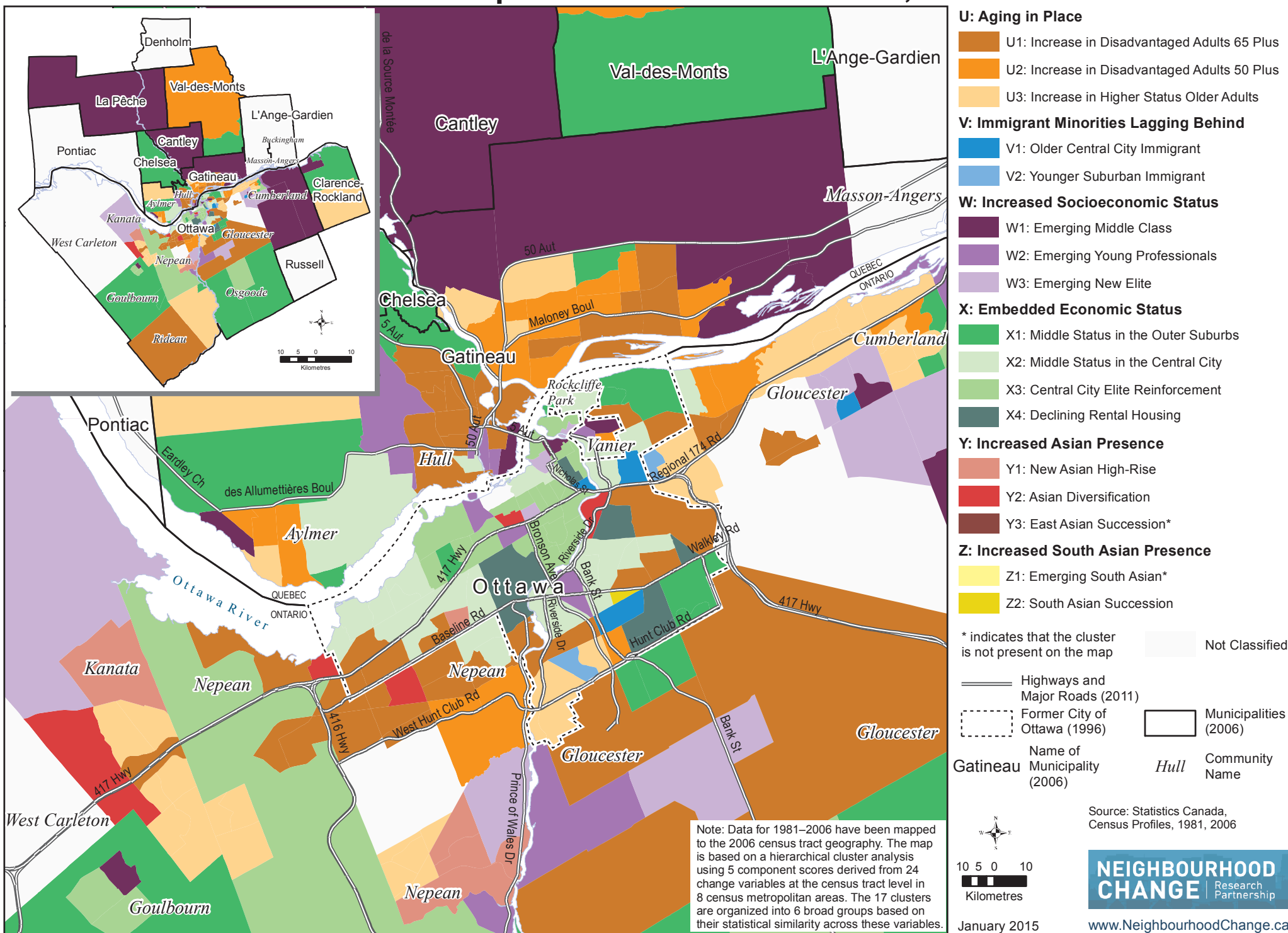
Montréal CMA: Typology of Neighbourhood Change by Census Tracts

Based on Six Groups and Seventeen Clusters, 1981–2006



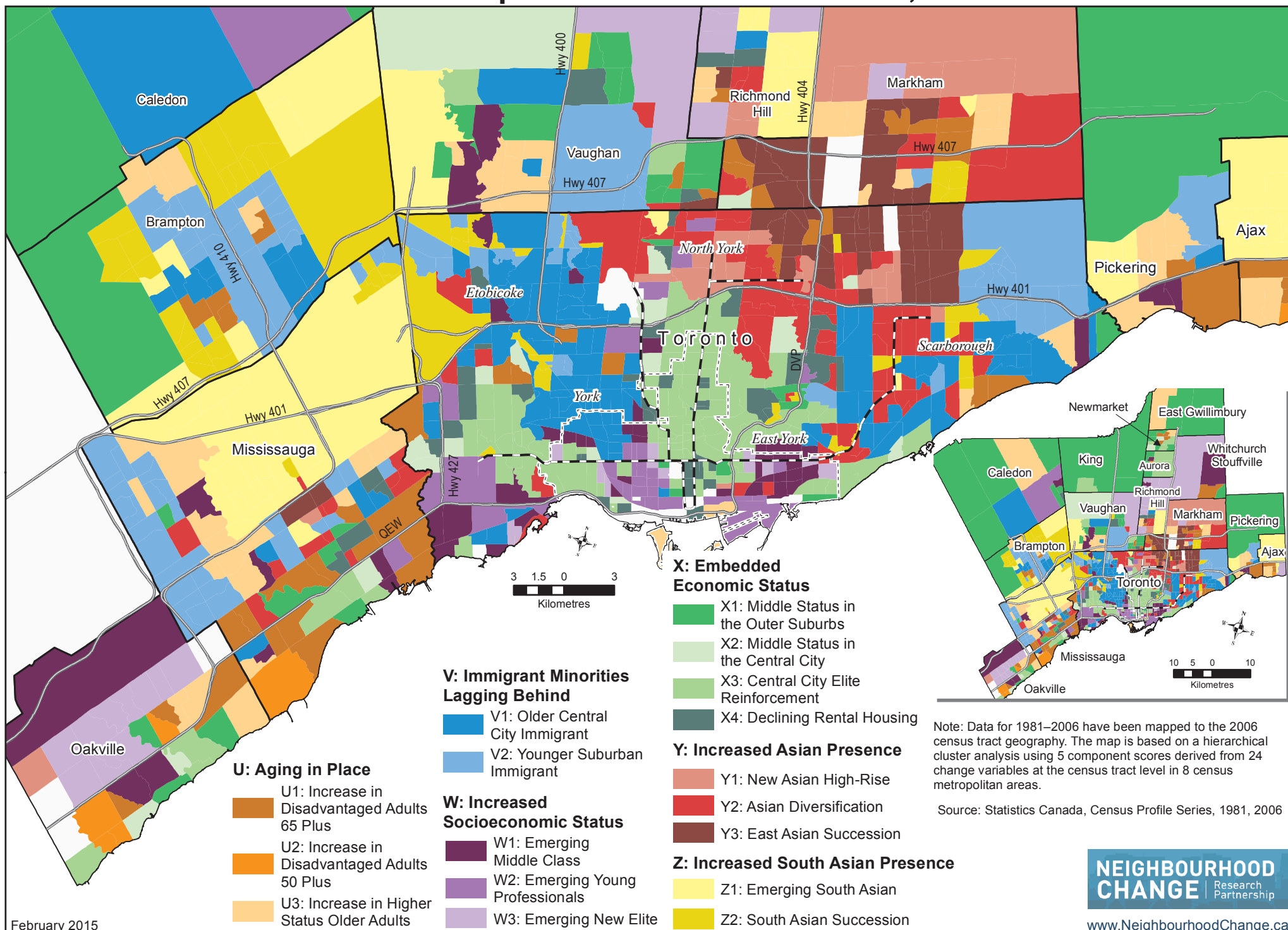
Ottawa - Gatineau CMA: Typology of Neighbourhood Change by Census Tracts

Based on Six Groups and Seventeen Clusters, 1981–2006



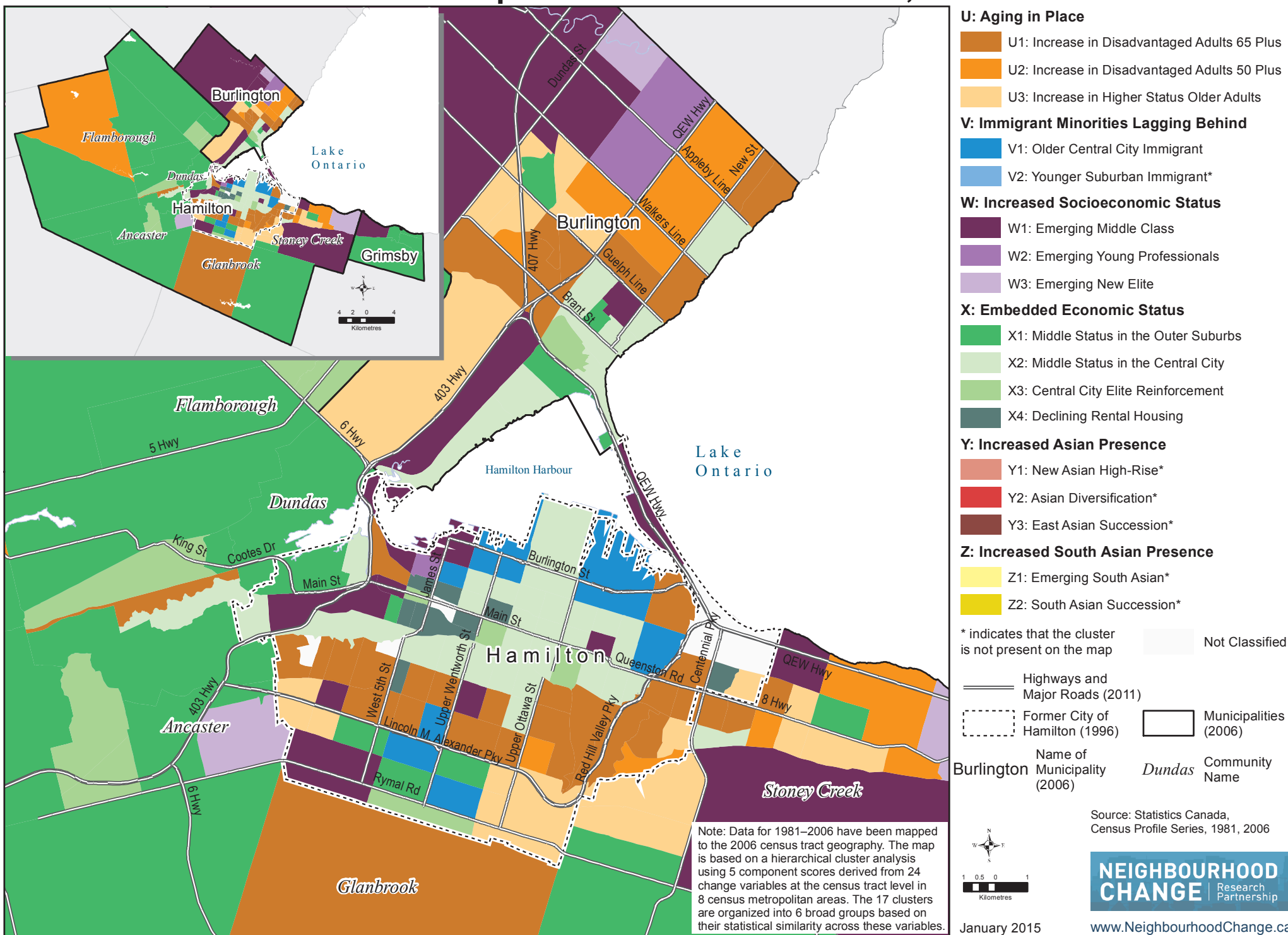
Toronto CMA: Typology of Neighbourhood Change by Census Tracts

Based on Six Groups and Seventeen Clusters, 1981–2006



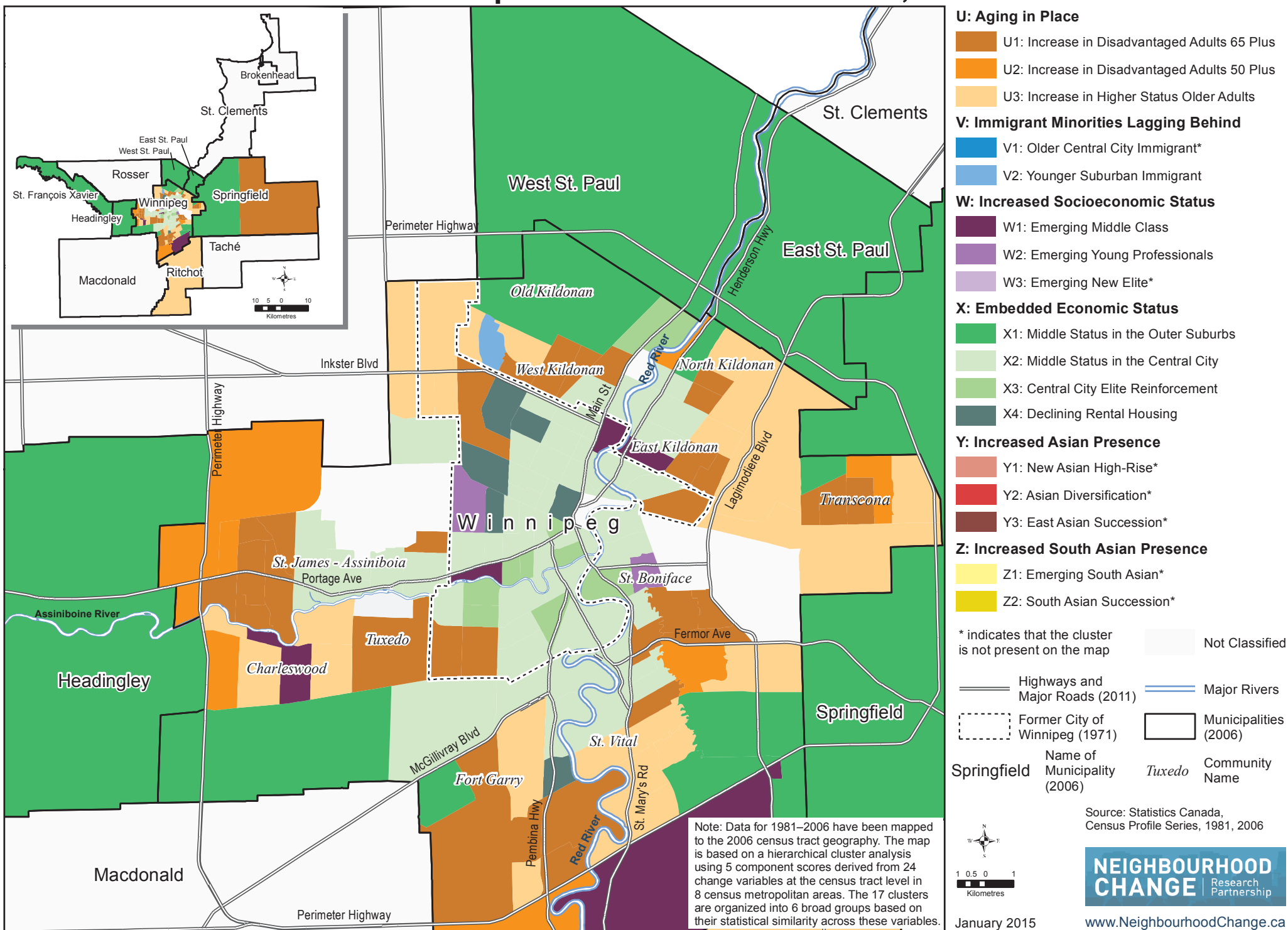
Hamilton CMA: Typology of Neighbourhood Change by Census Tracts

Based on Six Groups and Seventeen Clusters, 1981–2006



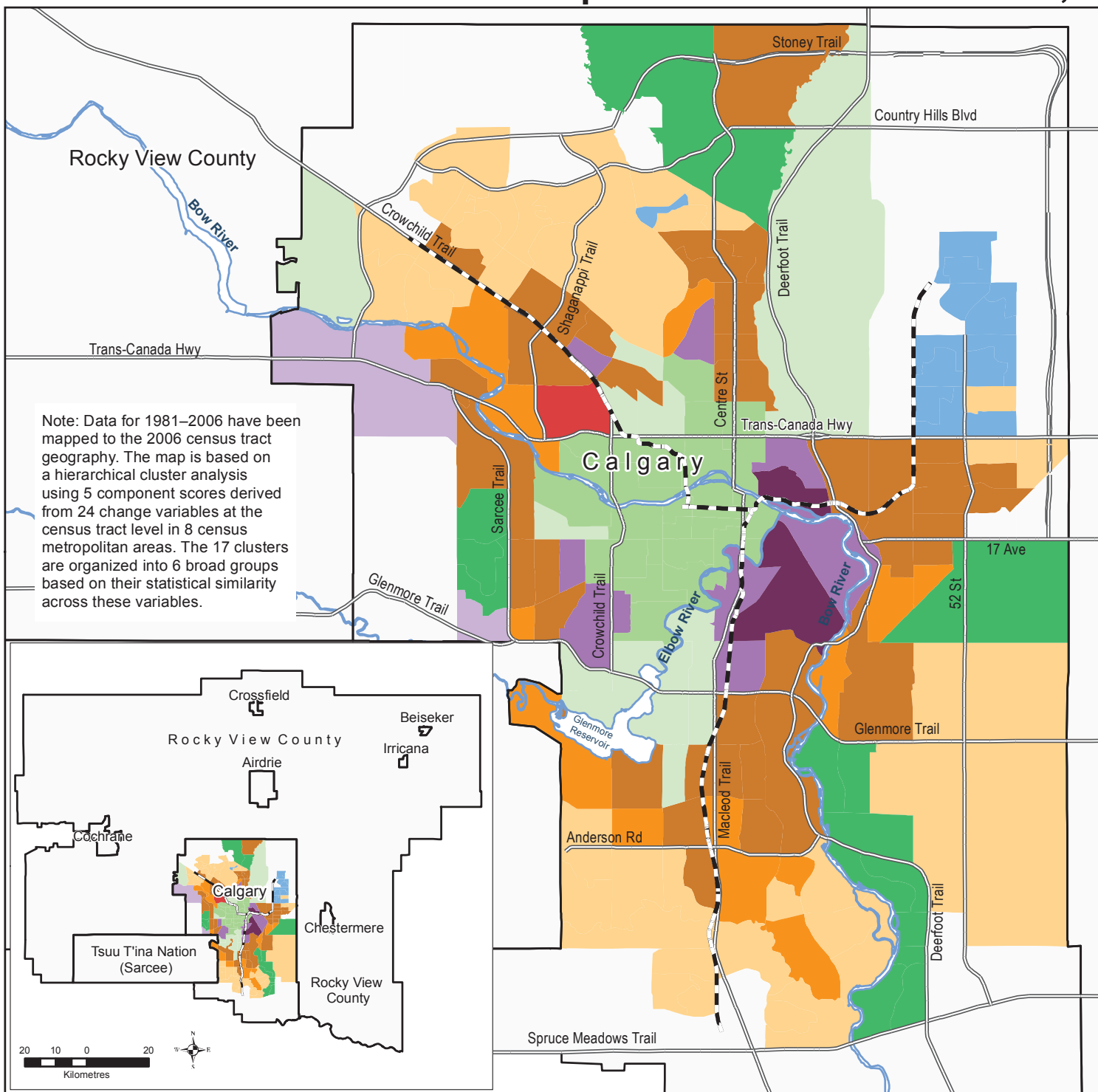
Winnipeg CMA: Typology of Neighbourhood Change by Census Tracts

Based on Six Groups and Seventeen Clusters, 1981–2006



Calgary CMA: Typology of Neighbourhood Change by Census Tracts

Based on Six Groups and Seventeen Clusters, 1981–2006



U: Aging in Place

- U1: Increase in Disadvantaged Adults 65 Plus
- U2: Increase in Disadvantaged Adults 50 Plus
- U3: Increase in Higher Status Older Adults

V: Immigrant Minorities Lagging Behind

- V1: Older Central City Immigrant*
- V2: Younger Suburban Immigrant

W: Increased Socioeconomic Status

- W1: Emerging Middle Class
- W2: Emerging Young Professionals
- W3: Emerging New Elite

X: Embedded Economic Status

- X1: Middle Status in the Outer Suburbs
- X2: Middle Status in the Central City
- X3: Central City Elite Reinforcement
- X4: Declining Rental Housing*

Y: Increased Asian Presence

- Y1: New Asian High-Rise*
- Y2: Asian Diversification
- Y3: East Asian Succession*

Z: Increased South Asian Presence

- Z1: Emerging South Asian*
- Z2: South Asian Succession*

* indicates that the cluster is not present on the map

Highways and Major Roads (2011)

Major Rivers

Not Classified

Rapid Transit (2011)

Municipalities (2006)

Rocky View County Name of Municipality (2006)



Source: Statistics Canada, Census Profile Series, 1981, 2006

3 1.5 0 3
Kilometres

NEIGHBOURHOOD CHANGE Research Partnership

January 2015

www.NeighbourhoodChange.ca

Vancouver CMA: Typology of Neighbourhood Change by Census Tracts

Based on Six Groups and Seventeen Clusters, 1981–2006

